



Regional Learning and Skills Observatory Seasonal Report - 7th Edition





Contents

| Section | Page |
|---|-------------|
| Introduction..... | 2 |
| Background..... | 3 |
| Key Regional Headlines | 4 |
| Feature: Education data | 5 - 11 |
| Feature: Business Register Employment Survey (BRES) | 12 - 13 |
| Feature: 'Our Region at a Glance' | 13 - 14 |
| Regional Summary | 15 - 18 |
| Carmarthenshire | 19 - 27 |
| Ceredigion | 28 - 36 |
| Neath Port Talbot | 37 - 45 |
| Pembrokeshire | 46 - 54 |
| Powys | 55 - 63 |
| Swansea | 64 - 72 |
| Glossary & Contact details..... | 73 - 74 |

**To access the Regional Learning & Skills Observatory,
please visit www.rlpsww.org.uk**



Regional Learning & Skills Observatory

Seasonal Report – 7th Edition

Introduction

Welcome to the Regional Learning & Skills Observatory's (RLSO's) seventh seasonal report, which covers the data period between December 2012 and February 2013. This report is based on data contained within the RLSO, highlighting data within key themes and sectors. In addition to a regional overview, we have aimed to provide a county by county breakdown against each of the identified key themes.

There are three features which are included within this edition; Education data, Business Register Employment Survey (BRES) data and 'Our Region at a Glance' fact sheet. The first feature covers the latest release of education data on the observatory, which is the pupil attainment data for key stages 2, 3 and 4. A summary is also provided about the 'Education Bespoke Reports' which can be found on page 11. The second feature covers the latest release of employment data on the observatory, which includes data for both full-time and part-time. The BRES data is summarised on pages 12 and 13. The third feature introduces 'Our Region at a Glance' factsheet which provides an overview of the South West and Central Wales region and covers particular themes such as the 2011 Census, economy, and housing. This can be found on page 13 and 14.

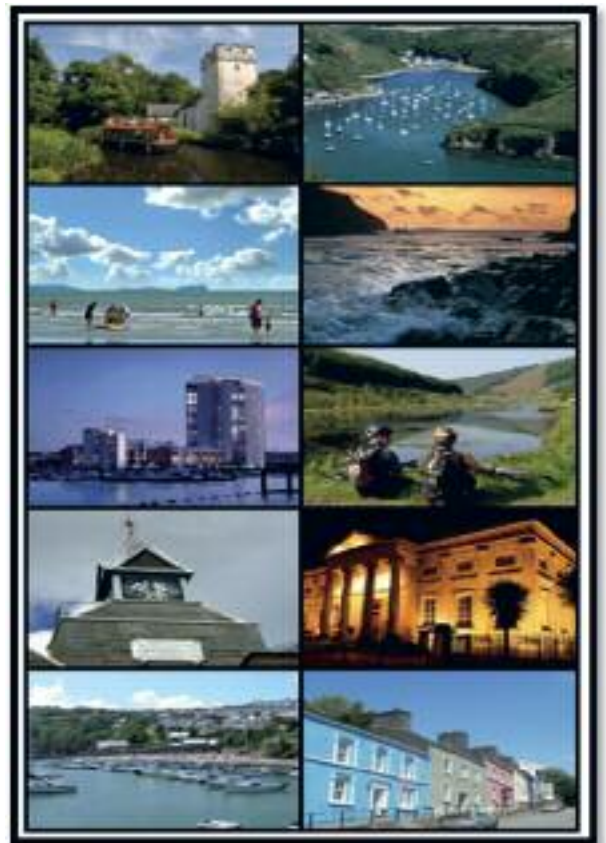
The Seasonal Report highlights headline data to act as a catalyst for individuals to use the observatory fully should they wish to look at and identify the contributory and comparative data that sits both beneath and alongside the headlines of this edition.



Background to the Regional Learning Partnership South West and Central Wales

The Regional Learning Partnership South West and Central Wales (RLPSW&CW) is a transformational partnership bringing education and regeneration partners together to help provide a better future for learners and potential learners across South West and Central Wales. Since forming in 2007, the RLP has been recognised by the Welsh Government for its 'transformational' work with regeneration and education organisations across counties within the region.

The partnership is made up of key representatives from local government, higher education, further education, the third sector and private sector / work based learning organisations. Each one has made a commitment to work collaboratively across the areas of education and regeneration in the South West and Central Wales region. Its main aim is to ensure that publicly-funded learning providers and associated organisations work collaboratively, effectively and efficiently to meet the needs of the learners and the regional economy in the region.



The Regional Learning Partnership has 3 key pillars, one of which is the RLSO;

The aim of the RLSO is to improve access to local data and intelligence for learning, skills, and the labour market, through a single website. The transparency of data within the interactive maps and tables is key to the continued use and effectiveness of the Observatory. As a means to primarily identifying the trends in data relating to employment, learning and skills within the region, it serves as a powerful tool to assist greater understanding, and to provide opportunities for further collaboration.

A glossary of the acronyms used within this report is provided on pages 73.



Key Regional Headlines

Destinations-

- **2012** figures show that there were **3,218** year 13 school leavers in South West and Central Wales. **58.8%** of this figure continued on to higher education, whilst **12.1%** went straight into employment. The county that had the highest proportion of school leavers go on to higher education was Carmarthenshire with an actual figure of **445**, whereas the county with the lowest number was Neath Port Talbot with an actual figure of **90**.

Benefits-

- The percentage of claimants for **ESA, Incapacity Benefits or Severe Disablement Allowance** decreased during the **August 2012 quarter** (in comparison with May 2012 figures). This trend was reflective for Income Support (with a child under 16 and no partner) and Widow's Benefit, Bereavement Benefit or Industrial Death Benefit.
- The number of working age people claiming **JSA** between December 2012 and February 2013 in the region **increased by 12%** from an actual figure of 16,725 in December to 18,736 in February. There was also an **overall increase** in the number of **JSA claimants aged between 17 and 24**, with there being 5,065 claimants in December and 5,765 in February that corresponds to an overall **increase of 13.8%**.

Vacancies-

- The number of **vacancies registered with Job Centre Plus (JCP) in the region increased between September and October 2012, but decreased by November 2012**. Between October and November there was an 8.8% decrease in the number of vacancies with Swansea having the majority of vacancies overall and Ceredigion having the least.

The live unfilled vacancy figures released by the Office of National Statistics (ONS) will no longer be published. Future Jobcentre Plus vacancies will be published by Jobcentre Plus using their Universal Jobmatch tool; once the data is made available the 'Regional Learning Skills Observatory (RLSO)' will notify users via the news page.



Feature: Education Data

Since the middle of 2012 the Regional Learning Partnership and ERW (Education through Regional Working/Ein Rhanbarth ar Waith) have worked collaboratively in order to promote improvement in standards of attainment and achievement and to build upon and 'add value' to the successful work of the individual local authorities based within the South West and Central Wales region: Carmarthenshire, Ceredigion, Neath Port Talbot, Pembrokeshire, Powys and Swansea.

In working closely with the Education Consortium, the RLSO now provides direct access to Education attainment data which is directly sourced from the Welsh Government's Statistical Directorate.

The uploading of the Education data onto the RLSO is a two phased approach. The first phase has been completed and the observatory now hosts Education attainment data for key stages 2, 3 and 4 on the **public area**.

Both the key stage 2 and 3 data includes percentages of pupils achieving the core subject indicator (CSI) and pupils achieving the expected level for individual core subjects; these datasets can also be broken down to show gender and subject components.

The CSI is achieved when the pupil achieves the expected level in all three of the key subjects; English or Welsh first language, Mathematics and Science.

Key stage 4 data shows the achievement of pupils, boys and girls. The measures show those that achieved Level 1 Threshold (a volume of qualifications equivalent to the volume of 5 GCSEs at grade D-G), Level 2 Threshold (a volume of qualifications equivalent to the volume of 5 GCSEs at grade A*-C), the CSI and Level 2 Threshold including English, Welsh and Maths. There are also measures showing the Average Wider Points Score (relates to the average point score of all the subjects taken by a pupil) and the Average Capped Wider Points Score (calculated using the best 8 results for each pupil).

The second phase of data that will be uploaded onto the observatory will be broken down to school level and smaller groups such as ethnic background and entitlement to free schools meals.

Further information will include key stage 4 data which will be broken down into all subjects; core and non-core which will also be available at school level.

Once the data has been made available, **specific** users will be able to locate the information via the Education area in the **'Members Domain'**.



Locating the Education Data on the RLSO



Education data on the RLSO can be found under the Data, Maps and Tables section on the home page.

Clicking Data, Maps and Tables will take you to the main area where all of the data is held. Education data can be found within the 'Education' theme under 'Schools' and 'Pupil Attainment.'



The three datasets available to view within the Education themes are:

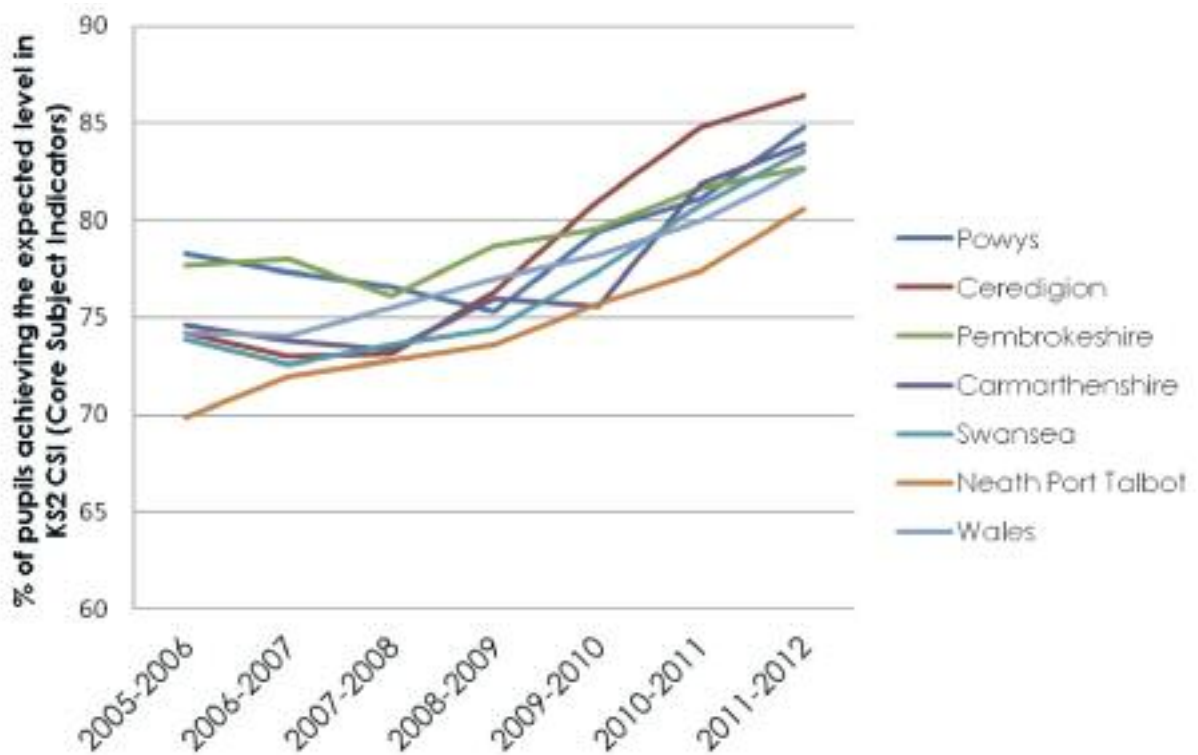
- Key Stage 2
- Key Stage 3
- Key Stage 4

Datasets can be manipulated to display selected data within a map or table format using the filter options.



The following graphs below are just a few examples of pupil attainment available via the RLSO:-

Table 1 - Percentage of pupils achieving the expected level in KS2 CSI (Core Subject Indicators)

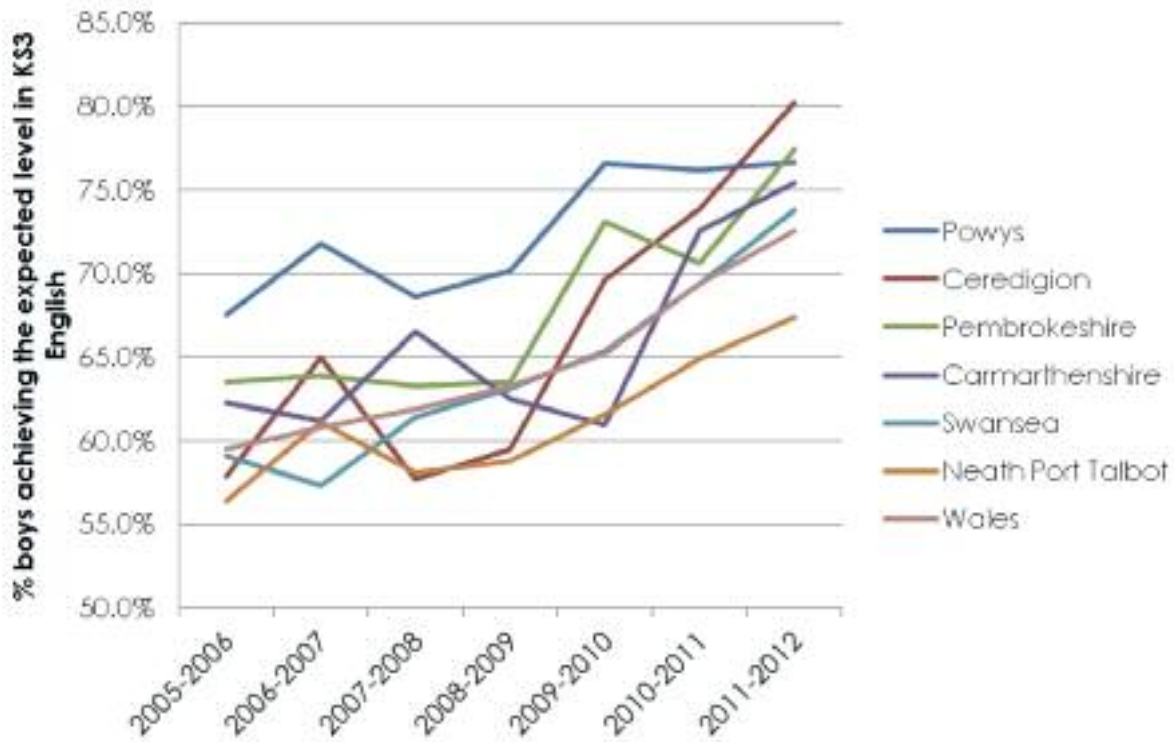


Between the 2011 and 2012 time period Ceredigion had the highest percentage (86.4%) of pupils achieving the expected level in Key Stage 2 CSI; which is 3.8% higher than the national average.

In the same period Neath Port Talbot (NPT) was the only authority within the region that had a lower average than the national figure; at 80.6%.



Table 2a- Percentage of boys achieving the expected level in KS3 English

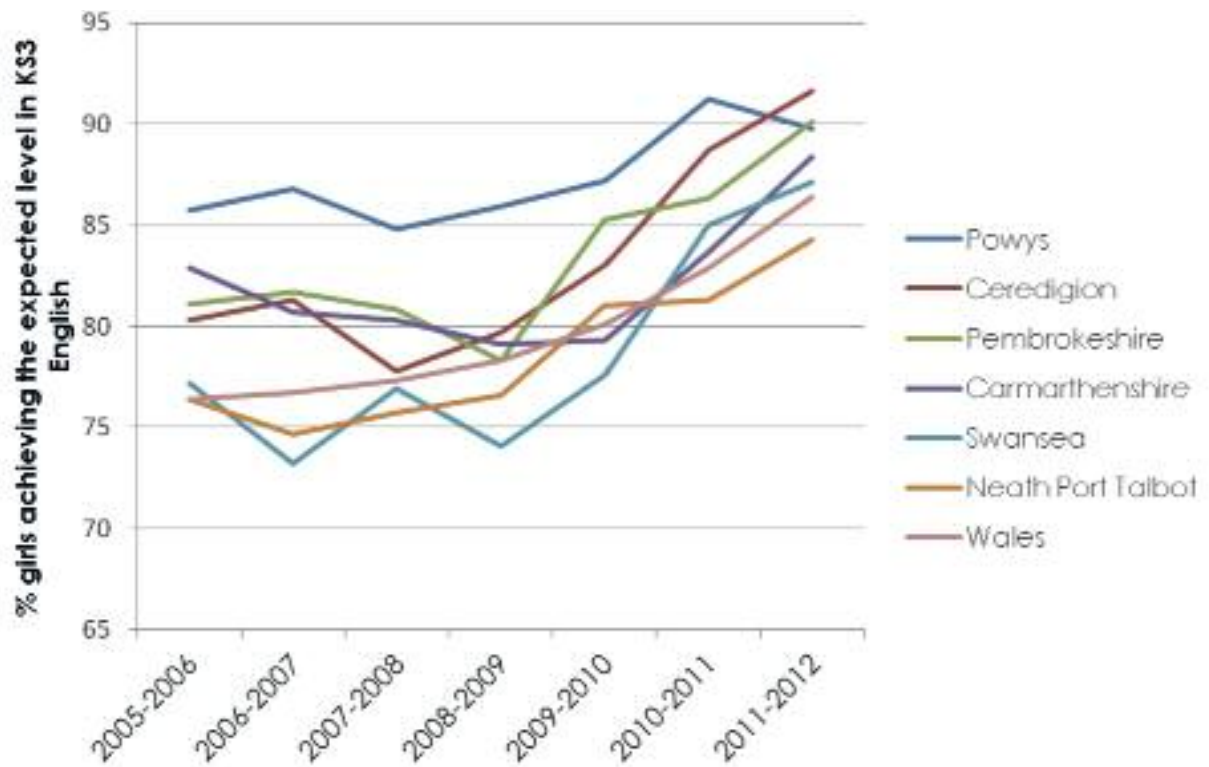


Between the 2011 and 2012 time period Ceredigion had the highest percentage (80.2%) of boys achieving the expected level in Key Stage 3 English; which is 7.6% higher than the national average.

In the same period NPT was the only authority within the region that had a lower average than the national figure; at 67.4%.



Table 2b- Percentage of girls achieving the expected level in KS3 English

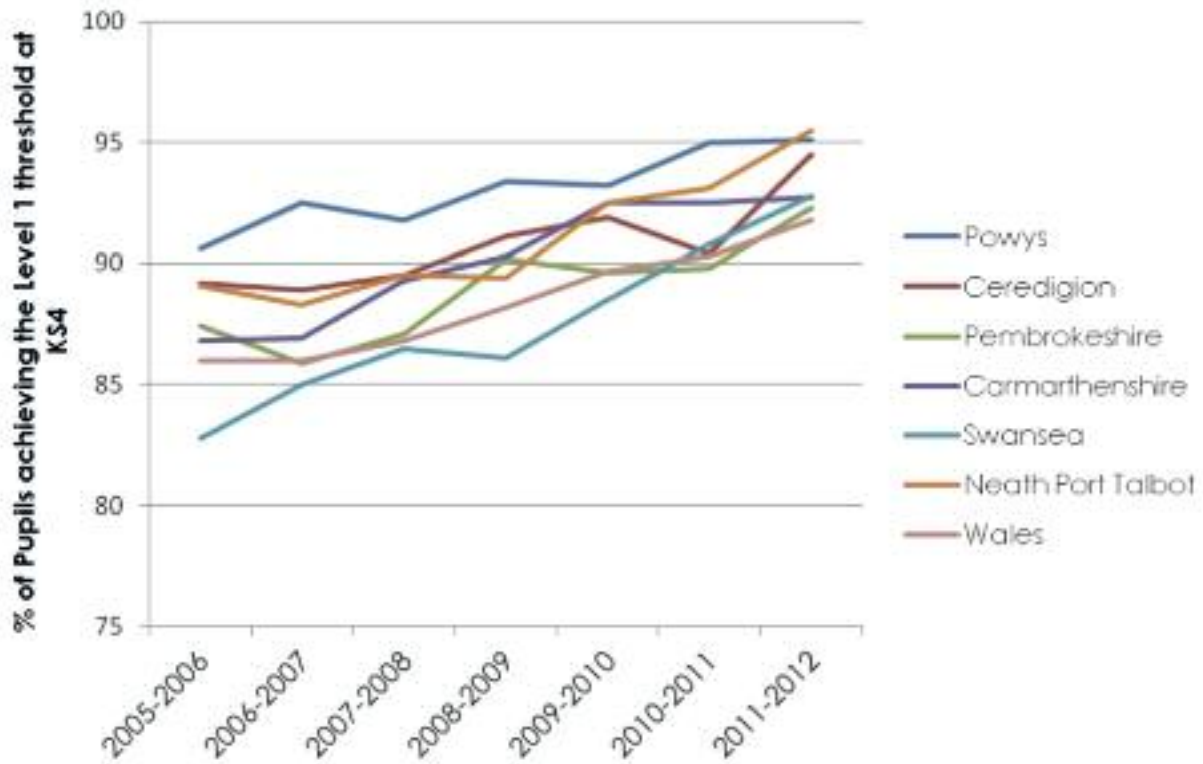


The percentage of girls achieving the expected level in Key Stage 3 English was highest in Powys between 2005 and 2011. Since 2011, attainment in Key Stage 3 English has been higher in Ceredigion at 91.6%; which is 5.2% higher than the national average.

Tables 2a and 2b show that the average attainment level of girls in Key Stage 3 English has been higher than boys since 2005.



Table 3a – Percentage of pupils achieving the Level 1 threshold at KS4

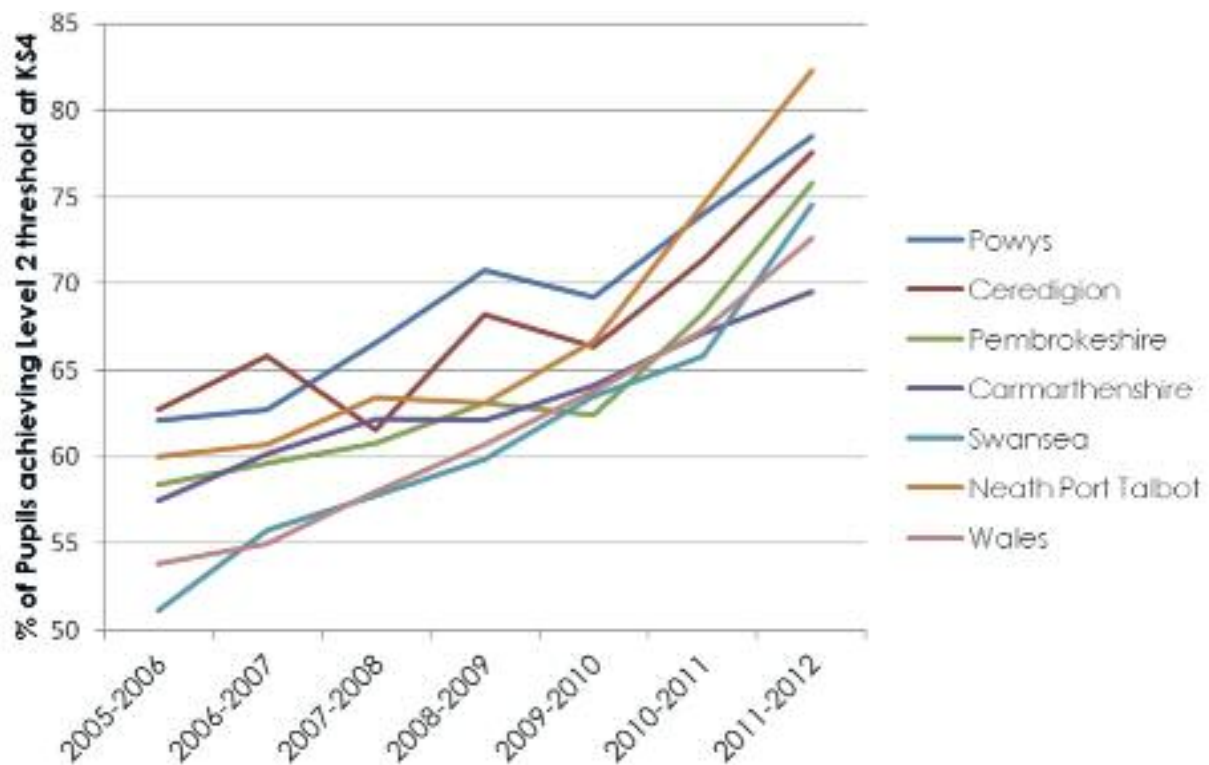


In the 2011 and 2012 time period, NPT had the highest percentage of pupils achieving the Level 1 threshold at Key Stage 4 with 95.5%. Comparisons with the national figure show that NPT was higher by 3.7%.

As per table 3a the graph shows that all pupils within the region were achieving above 90% between 2011 and 2012.



Table 3b - Percentage of pupils achieving the Level 2 threshold at KS4



NPT as seen in table 3b had the highest percentage (82.3%) of pupils achieving the Level 2 threshold at Key Stage 4 between 2011 and 2012; compared with the national average NPT was higher by 9.7%.

In the same period Carmarthenshire was the only authority within the region that had a lower average than the national figure; at 69.5%.

Education Bespoke Report

Bespoke reporting is currently being developed for uploading onto the RLSO website.

The bespoke reports will pull together key indicators that will provide an overview of performance for Key Stages 2, 3 and 4 and will be made available in both English and Welsh.

The reports will provide comparative data showing performance in the core subjects (English, Welsh (first language), Maths and Science). They will allow comparisons to be made between the Local Authorities and the Region. Data will be included for all pupils, along with gender breakdown. There will also be comparisons between attainment of pupils according to their eligibility for Free Schools Meals.



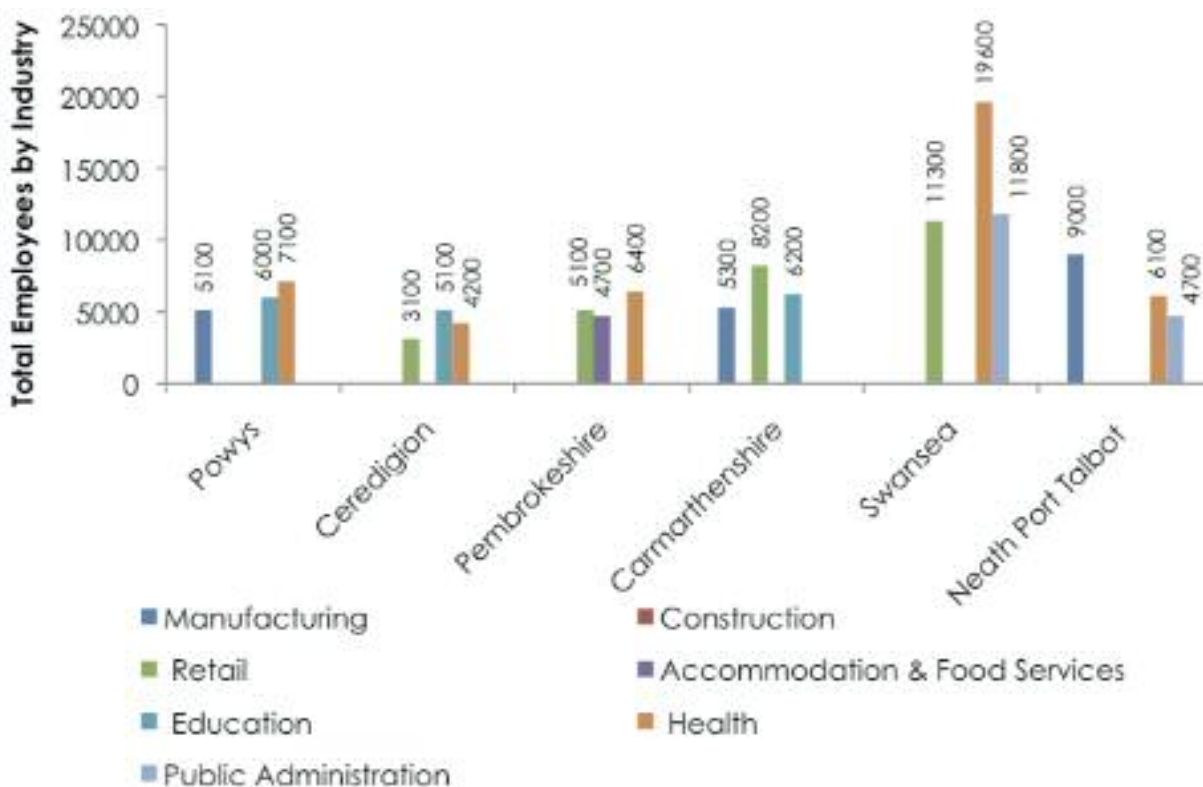
Feature: Business Register Employment Survey (2011 BRES)

BRES (Business Register Employment Survey) is the official source of employee and employment estimates by detailed geography and industry. The latest data available via the observatory is the 2011 BRES which is broken down into full/part-time, total employment/employees and detailed industry (5 digit SIC2007).

The BRES data can be accessed by clicking Data, Maps and Tables on the home page of the observatory and by choosing the 'Economy' theme. By clicking on the 'Employment' sub-theme users will be able to view the above datasets and public and private sector breakdown.

The table below is one example of employment data available via the observatory. Another example of BRES can be found on page 14 within the 'Our Region at a Glance' factsheet. The factsheet provides an overview of employees by industry and employee and employment estimates in the South West and Central Wales region.

Table 4 – Top 3 total numbers of employees by Industry per local authority 2011



The information in table 4 has been sourced from the BRES 2011. The graph illustrates the three sectors that have the largest employee numbers within each local authority.



The health sector is the most regionally significant employer, with health featuring within the top three sectors for five of the six local authority areas; it was also the largest single sector in Swansea (19,600), Powys (7,100) and Pembrokeshire (6,400).

The retail sector is a further regionally significant employer with employment in the sector featuring in four of the six local authority top three sectors. Retail was the largest single sector for employment within Carmarthenshire at 8,200.

Both education and manufacturing feature prominently within the region. Education is the largest employer within the county of Ceredigion with a total number of 5,100 employees. Manufacturing was the largest single sector for employment within Neath Port Talbot at 9,000.

Feature: Our Region at a Glance Fact Sheet

The 'Our Region at a Glance' fact sheet provides an overview of the South West and Central Wales region, by utilising key themes available within the RLSO; the 2011 Census and Economy. In detail the fact sheet includes some of the latest core indicators on demography, education, skills, qualifications, housing, economy, labour market and projection data.

The fact sheet is a two page document which is available in both English and Welsh.

County level factsheets are also available for Carmarthenshire, Ceredigion, Neath Port Talbot, Pembrokeshire, Powys and Swansea which will cover the same core indicators shown in 'Our Region at a Glance'.

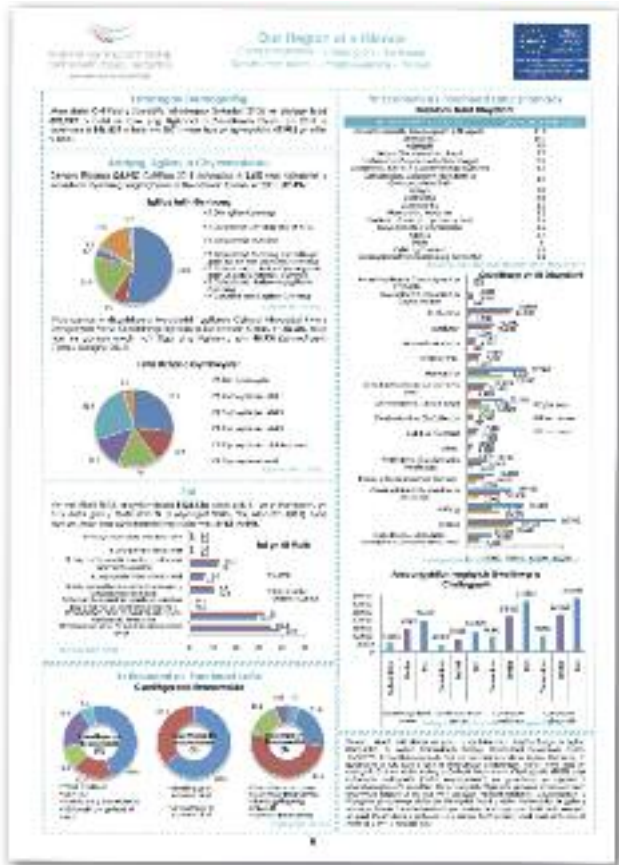
The region and county level fact sheets have been designed as a quick and efficient method of providing relevant and up to date information to the public, partners and stakeholders of the RLSO.

The team are also planning to design and develop fact sheets to cover the Welsh Government's nine priority sectors; Creative Industries, Information, Communication & Technology (ICT), Energy and Environment, Advanced Materials and Manufacturing, Life Sciences, Financial and Professional Services, Food and Farming, Construction and Tourism.



The Region at a Glance fact sheet and the Counties at a Glance fact sheets can be found under the Publications section on the home page.

Clicking Publications will enable you to access a list of publications by theme. The At a Glance fact sheets can be found within 'Factsheets' and under the 'At a Glance fact sheets' theme.





Regional Summary

Key statistics and data for South West and Central Wales for the winter months of 2012 are detailed in the following pages.

According to figures from the Office for National Statistics (ONS) on the 30th of June 2011, there were **893,509** people living in South West and Central Wales.

South West and Central Wales's Population Age Range

Below is an age group profile for the population of South West and Central Wales, according to the ONS on the 30th of June 2011.

Total Regional Population – **893,509**



| Age Category | Percentage | Actual Number |
|---|------------|---------------|
| Number of people aged between 0 and 4 years | 5.3% | 47,799 |
| Number of people aged between 0 and 15 years | 17.3% | 154,950 |
| Number of people aged between 5 and 15 years | 12.0% | 107,151 |
| Number of people aged between 14 and 19 years | 7.6% | 67,837 |
| Number of people aged between 16 and 24 years | 12.0% | 107,335 |
| Number of people aged between 16 and 29 years | 17.5% | 156,488 |
| Number of people aged between 16 and 64 years | 62.4% | 557,659 |
| Number of people aged over 65+ years | 20.2% | 180,900 |

Vacancies

The most recent data shows there were **6,466** vacancies in South West and Central Wales in **November 2012** that were notified to JCP.



Out of the **6,466** vacancies **75.5%** had been live unfilled for **less than 1 month**.

20.3% had been live unfilled for a period of between **1 to 3 months**. **3.5%** had been live unfilled for a period between **3 to 6 months**, **0.6%** had been live and unfilled between **6 months and 1 year** and **0.1%** had been live and unfilled for **over 2 years**.

Vacancy Breakdown

The table below shows in which industries the vacancies were during the autumn months of 2012.

| Industry | September 2012 | | October 2012 | | November 2012 | |
|---|----------------------|---------------|----------------------|---------------|----------------------|---------------|
| | % of Total Vacancies | Actual Figure | % of Total Vacancies | Actual Figure | % of Total Vacancies | Actual Figure |
| Agriculture & Fishing | 0.2% | 13 | 0.9% | 62 | 0.4% | 27 |
| Energy & Water | 1.4% | 89 | 0.4% | 25 | 0.2% | 10 |
| Manufacturing | 2.4% | 158 | 2.1% | 151 | 1.6% | 105 |
| Construction | 3.5% | 225 | 2.0% | 145 | 2.4% | 155 |
| Distribution, Hotels & Restaurants | 9.5% | 616 | 10.6% | 753 | 15.5% | 1,002 |
| Transport & Communications | 6.1% | 393 | 9.1% | 646 | 7.6% | 490 |
| * Banking, Finance & Insurance | 54.3% | 3,509 | 53.7% | 3,811 | 55.8% | 3,606 |
| Public Administration, Education & Health | 20.9% | 1,348 | 19.3% | 1,366 | 14.3% | 923 |
| Other Services | 1.6% | 106 | 1.9% | 134 | 2.3% | 148 |
| TOTAL | | 6,457 | | 7,093 | | 6,466 |

* Figures contained in the 'Banking, Finance, Insurance' indicator, are influenced by the fact that recruitment agency jobs notified to JCP are coded under the heading (irrespective of what industry the job is actually in).








The number of vacancies notified to JCP is estimated to represent 19% of total vacancies in the job market (JCP).



Benefits

The most recent quarterly data, (*Department of Work & Pensions – August 2012*) shows that **95,930** people of working age, claimed benefits within South West and Central Wales (estimated 17.6% of total working age and non-working age regional population)

Here is a breakdown of the benefits claimed in South West and Central Wales during the **August 2012 quarter**; Please note that previous quarterly data is available on the RLSO.

| Type of Benefit | August 2012 Qtr-Percentage of total benefits claimed | May 2012 Quarterly Percentages | August 2012 Qtr Actual figure |
|---|---|--------------------------------|-------------------------------|
| ESA, Incapacity Benefits or Severe Disablement Allowance |  52.5% | 53.4% | 50,400 |
| Disability Living Allowance, Attendance Allowance or Industrial Injuries Benefits |  8.5% | 8.3% | 8,150 |
| JSA |  18.1% | 17.4% | 17,360 |
| Income Support with a child under 16 and no partner |  7.3% | 7.5% | 6,980 |
| Carer's Allowance |  9.9% | 9.7% | 9,460 |
| Other Income Support (Including IS Disability Premium) or Pension Credit |  2.5% | 2.5% | 2,370 |
| Widow's Benefit, Bereavement Benefit or Industrial Death Benefit |  1.2% | 1.3% | 1,190 |

Monthly data for **February 2013** shows that the total number of working age people claiming JSA in South West and Central Wales was **18,736**.



The table below shows how these figures have varied over the winter months;

| | December 2012 | January 2013 | February 2013 |
|----------------------------|----------------------|---------------------|----------------------|
| Total JSA Claimants | 16,725 | 18,032 | 18,736 |

The number of people **aged between 17 and 24** in the region claiming JSA during the winter period was **16,365**.

The table below shows how these figures have varied over the winter months;

| | December 2012 | January 2013 | February 2013 |
|----------------------------|----------------------|---------------------|----------------------|
| Total JSA Claimants | 5,065 | 5,535 | 5,765 |

Destinations Data (2012)

The table below presents the results from the Careers Wales Year 11, 12 and 13 School Leavers Destinations survey (2012) for the South West and Central Wales region.

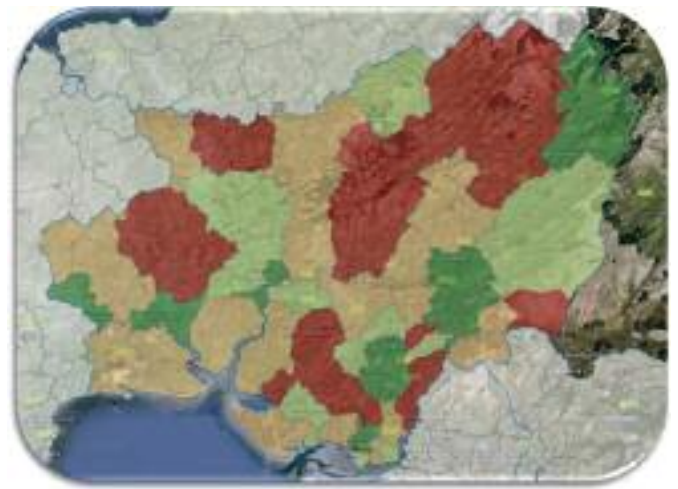
| | Year 11 | Year 12 | Year 13 |
|---------------------------------|----------------|----------------|----------------|
| Continued in college | 4,597 | 453 | 301 |
| Continued in school | 3,905 | 3,054 | 317 |
| Continued into higher education | 0 | 0 | 1,891 |
| Gap year | 0 | 0 | 33 |
| Part-time Education | 57 | 18 | 16 |
| Employed | 168 | 93 | 388 |
| NEET | 315 | 81 | 121 |
| WBT – Employed | 110 | 17 | 36 |
| WBT – Non-employed | 601 | 83 | 16 |
| No response | 48 | 25 | 71 |
| Moved away | 115 | 34 | 28 |
| Total Numbers | 9,916 | 3,858 | 3,218 |



Carmarthenshire

Key statistics and data for Carmarthenshire during the winter months of 2012 are detailed in the following pages.

Figures from ONS on the 30th of June 2011 stated that there were **183,961** people living in Carmarthenshire.



Carmarthenshire's Population Age Range

Below is an age structure profile for the population of Carmarthenshire, according to the ONS on the 30th of June 2011.

| Age Category | Actual Figure | Percentage | Wales Comparator |
|---|----------------|------------|------------------|
| Total Population | 183,961 | N/A | 3,063,758 |
| Number of people aged between 0 and 4 years | 10,350 | 5.6% | 5.8% |
| Number of people aged between 0 and 15 years | 33,026 | 18.0% | 18.1% |
| Number of people aged between 5 and 15 years | 22,676 | 12.3% | 12.3% |
| Number of people aged between 16 and 24 years | 19,601 | 10.7% | 12.2% |
| Number of people aged between 16 and 29 years | 29,190 | 15.9% | 18.2% |
| Number of people aged between 16 and 64 years | 112,488 | 61.1% | 63.4% |
| Number of people aged over 65+ years | 38,447 | 20.9% | 18.5% |



Tourism (STEAM 2011 Statistics)

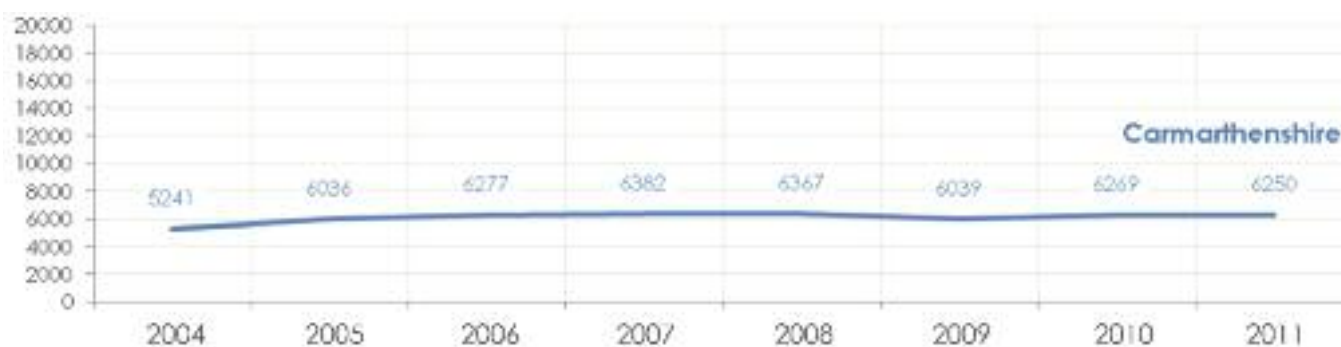
Below are some key statistics taken from the Scarborough Tourism Economic Assessment Monitor (STEAM) reports for 2011. These reports are published annually for each county and can be found on the RLSO website.

Employment

According to the STEAM reports for 2011, the total number of people in full time equivalent jobs within the tourism sector, in Carmarthenshire during 2011 was **6,250**. The table below breaks down some of the key sub-sectors in which these people were employed.

| % in Accommodation | % in Food & Drink | % in Recreation | % in Shopping | % in Transport |
|--------------------|-------------------|-----------------|---------------|----------------|
| 23.3% | 22.9% | 9.5% | 16.3% | 8.1% |

The chart below shows how this figure has varied since 2004



Expenditure

The total expenditure in the tourism sector in Carmarthenshire during 2011 was **£355 million (2011 £'s millions)**. The table below breaks down the expenditure (by %) within the sub-sectors.

| % in Accommodation | % in Food & Drink | % in Recreation | % in Shopping | % in Transport |
|--------------------|-------------------|-----------------|---------------|----------------|
| 7.2% | 18.8% | 6.4% | 14.7% | 14.9% |



Tourist Numbers

The total tourist numbers in Carmarthenshire during 2011 was **3,005,000**. The table below breaks down some of the key areas in which this total expenditure was incurred.

| % staying in Serviced Accommodation | % staying in non- Serviced Accommodation | % staying with friends or family | % day visitors |
|-------------------------------------|--|----------------------------------|----------------|
| 6.1% | 16.4% | 9.3% | 68.3% |

Benefits

The most recent quarterly data, (*Department of Work & Pensions – August 2012*) shows that **20,160** people of working age claimed benefits within Carmarthenshire.

Here is a breakdown of the benefits claimed in Carmarthenshire during the **August 2012** quarter;

| Type of Benefit | Percentage of total benefits claimed | Actual figure | Regional Percentage |
|--|--------------------------------------|---------------|---------------------|
| ESA, Incapacity Benefits or Severe Disablement Allowance | 53.9% | 10,860 | 52.5% |
| Disability Living Allowance, Attendance Allowance or Industrial Injuries Benefits | 8.2% | 1,660 | 8.5% |
| JSA | 17.8% | 3,590 | 18.1% |
| Income Support with a child under 16 and no partner | 6.7% | 1,360 | 7.3% |
| Carer's Allowance | 9.8% | 1,980 | 9.9% |
| Other Income Support (Including IS Disability Premium) or Pension Credit | 2.4% | 490 | 2.5% |
| Widow's Benefit, Bereavement Benefit or Industrial Death Benefit | 1.1% | 230 | 1.2% |

Monthly data for **February 2013** shows that there were a total of **3,737** (3.4% of the total working age population) people claiming JSA in Carmarthenshire.



The table below shows the trend of how these figures have varied over the winter months;

| December 2012 | | January 2013 | | February 2013 | |
|---------------------|-----------------------------|---------------------|-----------------------------|---------------------|-----------------------------|
| Total JSA Claimants | % of working age population | Total JSA Claimants | % of working age population | Total JSA Claimants | % of working age population |
| 3,467 | 3.1% | 3,625 | 3.3% | 3,737 | 3.4% |

The number of people **aged between 17 and 24** in the county, who were claiming JSA during the winter months was **3,390**.

The table below shows the trend of how these figures have varied over the winter months;

| December 2012 | | January 2013 | | February 2013 | |
|-------------------------------------|---|-------------------------------------|---|-------------------------------------|---|
| Total JSA Claimants (Aged 17 to 24) | % of total JSA claimants who are aged between 17 and 24 | Total JSA Claimants (Aged 17 to 24) | % of total JSA claimants who are aged between 17 and 24 | Total JSA Claimants (Aged 17 to 24) | % of total JSA claimants who are aged between 17 and 24 |
| 1,085 | 31.3% | 1,145 | 31.6% | 1,160 | 31.0% |

The **LSOA** in Carmarthenshire which had the **most** JSA Claimants in February 2013 was **Glanymor 3** with **92 claimants**. The **LSOA's** with the **lowest** amount of JSA Claimants were **Carmarthen Town North 4** and **Llansteffan** with **9 claimants each**.

Vacancies

During November 2012 there were **1,047** vacancies in Carmarthenshire that were notified to JCP.

Out of the **1,047** vacancies, **72.4%** had been live unfilled for **less than 1 month**. **20.4%** had been live unfilled for a period of between **1 to 3 months** and **4.8%** had been live unfilled between **3 and 6 months**.



Vacancy Breakdown

The table below shows in which industries the vacancies were during the autumn months of 2012.

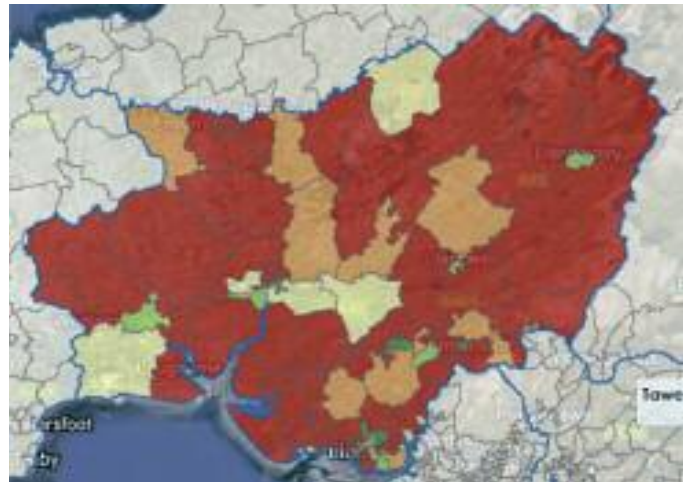
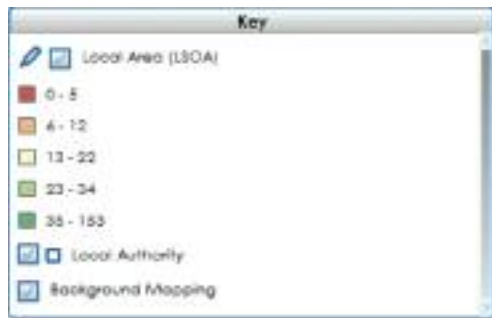
| Industry | September 2012 | | October 2012 | | November 2012 | |
|--|----------------------|---------------|----------------------|---------------|----------------------|---------------|
| | % of Total Vacancies | Actual Figure | % of Total Vacancies | Actual Figure | % of Total Vacancies | Actual Figure |
| Agriculture & Fishing | 0.5% | 3 | 3.0% | 28 | 0.1% | 1 |
| Energy & Water | 3.9% | 25 | 0.0% | 0 | 0.2% | 2 |
| Manufacturing | 4.3% | 28 | 3.2% | 30 | 3.8% | 40 |
| Construction | 2.3% | 15 | 2.2% | 21 | 1.3% | 14 |
| Distribution, Hotels & Restaurants | 18.5% | 120 | 18.0% | 169 | 21.1% | 221 |
| Transport & Communications | 4.5% | 29 | 9.7% | 91 | 3.6% | 38 |
| * Banking, Finance & Insurance | 35.5% | 230 | 36.3% | 341 | 44.6% | 467 |
| Public Administration, Education & Health | 26.9% | 174 | 23.9% | 224 | 22.6% | 237 |
| Other Services | 3.6% | 23 | 3.7% | 35 | 2.6% | 27 |
| TOTAL | | 647 | | 939 | | 1,047 |

* Figures contained in the 'Banking, Finance, Insurance' indicator are influenced by the fact that recruitment agency jobs notified to JCP are coded under the heading (irrespective of what industry the job is actually in)

The number of vacancies notified to JCP is estimated to represent 19% of total vacancies in the job market (JCP)



Distribution of Vacancies across Carmarthenshire



This map from the RLSO shows how vacancies were distributed across every ward in Carmarthenshire during **November 2012**. The key shown above refers to the number of vacancies. For example, the areas shown as red in the map only had between **0-5** vacancies during **November 2012**.

Vacancies by Ward

The table below groups each ward in Carmarthenshire in relation to the number of vacancies reported during the month of November 2012.

| LSOA's | | | Number of vacancies |
|---|---|--|---------------------|
| <ul style="list-style-type: none"> • Ammanford 1 • Betws • Bigyn 2, Bigyn 3, Bigyn 4, • Burry Port 1, Burry Port 3 • Bynea 2 • Carmarthen Town North (1,2,3,4) • Carmarthen Town West (1 and 3) • Cilycwm • Cynwyl Elfed (1 and 2) • Cynwyl Gaeo • Elli 1 • Garnant • Glanamman 2 • Glanymor (1,2 and 3) • Gorslas (1 and 2) • Hendy 1 • Hengoed (1,2 and 3) | <ul style="list-style-type: none"> • Kidwelly (1 and 2) • Laugharne Township 2 • Llanboidy • Llandeilo 1 • Llandovery 1 • Landybie 2 • Lanegwad 2 • Lanfihangel Aberbythych • Lanfihangel-ar-arth 2 • Llangadog • Llangeler (1 and 2) • Llangennech (1 and 2) • Llangunnor 1 • Llangynderyn (1 and 2) • Llanon 2 • Llansteffan • Llanybydder 2 • Lliedi 2 • Llwynhendy (1 and 2) | <ul style="list-style-type: none"> • Pembrey (1 and 2) • Penygroes 2 • Pontamman (1 and 2) • Pontyberem (1 and 2) • Quarter bach 2 • St. Clears 2 • St. Ishmael (1 and 2) • Saron 2 • Swiss Valley (1 and 2) • Trelech • Trimsaran (1 and 2) • Tycroes • Tyisha (2 and 3) • Whitland | <p>0-5</p> |



Vacancies by Ward (continued)

| LSOA's | | Number of vacancies |
|--|--|---------------------|
| <ul style="list-style-type: none"> • Abergwili • Bynea 1 • Cenarth • Glanamman 1 • Glyn • Llandybie 1 | <ul style="list-style-type: none"> • Llanegwad 1 • Llanfihangel-ar-Arth 1 • Llanon 3 • Manordeilo and Salem • Penygroes 1 • Quarter bach 1 | 6-12 |
| <ul style="list-style-type: none"> • Burry Port 2 • Carmarthen Town West 2 • Dafen 2 • Hendy 2 • Laugharne Township 1 | <ul style="list-style-type: none"> • Llanddarog • Llangennech 3 • Llangunnor 2 • Llanybydder 1 • Tyisha 1 | 13-22 |
| <ul style="list-style-type: none"> • Bigyn 1 • Carmarthen Town South 2 • Llandeilo 2 • Llandovery 2 | <ul style="list-style-type: none"> • Lliedi 1 • Llwynhendy 2 • St Clears 1 • Saron 1 | 23-34 |
| <ul style="list-style-type: none"> • Ammanford 2 • Carmarthen Town South 1 • Dafen 1 | <ul style="list-style-type: none"> • Elli 2 • Felinfoel • Llanon 1 | 35-153 |

To find out more detailed information regarding vacancies in South West and Central Wales follow the link below;

<http://rlp.infobasecymru.net/IAS/dataviews/tabular?viewId=599&geold=1&subsetId=42>



Destinations Data (2012)

The table below presents the results from the Careers Wales Destinations survey (2012). The data relates to year 11, 12 and 13 school leavers.

| | Year 11 | Year 12 | Year 13 |
|---------------------------------|--------------|------------|------------|
| Continued in college | 936 | 96 | 79 |
| Continued in school | 900 | 658 | 79 |
| Continued into higher education | 0 | 0 | 445 |
| Gap year | 0 | 0 | 3 |
| Part time education | 20 | 5 | 5 |
| Employed | 31 | 22 | 98 |
| NEET | 92 | 16 | 27 |
| WBT – Employed | 27 | 1 | 11 |
| WBT – Non-employed | 106 | 11 | 0 |
| No response | 13 | 1 | 8 |
| Moved away | 11 | 4 | 0 |
| Total Numbers | 2,136 | 814 | 755 |

Pupil Numbers and Schools

According to the latest data from the annual year 2011/2012, there are **15,014** pupils in primary schools in Carmarthenshire (WAG-PLASC data) distributed across **108** schools throughout the county.

There are **11,946** pupils in secondary schools in the county. This total is distributed across **14** secondary schools.

For the annual year period 2011-2012, a total of **17.7%** of all primary school pupils in Carmarthenshire were classified as being **eligible for free school meals (18.8 % for Wales)**.

13.2% of all secondary school pupils in the county were classified as being **eligible for free school meals** for the annual year 2011-2012 (**15.8 % for Wales**).

The **Pupil Teacher Ratio** for LEA maintained **primary** schools for the annual year 2011-2012, in Carmarthenshire was **18.9** (Wales Figure was 20.7). The figure for LEA maintained secondary schools was **16.4** (Wales Figure 16.7).

74.3% of relevant pupils in the annual year 2011-2012 achieved the expected level in Key Stage 3 (Level 5+) in Carmarthenshire. This is in comparison to the national figure which was **72.5%**.



Other key facts about Carmarthenshire contained within the Observatory

Local Authority Finance

- According to data provided by Welsh Government, the gross revenue expenditure on **Social Services** (£ per head) during **2012-2013** in **Carmarthenshire** was **£515** (*Expenditure covers children and families services, including children's homes, fostering and adoptive services, home care and nursing homes, care for the elderly, care for people with physical, mental or learning disabilities, asylum seekers and substance misuse*).
- The gross revenue expenditure on **Education** (£ per head) during **2012-2013** in **Carmarthenshire** was **£863** (*Expenditure covers individual school's budget, additional learning needs, inter authority recoupment, staff, school improvements and access to education*).

Economy

- Out of a total **13,435** companies in **Carmarthenshire** in 2011 **0.7%** were foreign owned according to the Welsh Government Regional Economic Labour Market Profile.
- **10.9%** of employees in **Carmarthenshire** during 2011 were working within foreign owned companies with the remaining **89.1%** working within UK owned companies.

Energy & Environment

- According to figures published for the June 2012 quarter, **1,670** households had domestic solar photovoltaic installations in **Carmarthenshire**.
- In 2011, the total consumption of domestic electricity and gas in the county was **996,717mWh**, which is a **5.3% decrease** on figures relating to 2010.

Agriculture

- The Welsh Agricultural Small Area Statistics (2011) states that the total area farmed, in hectares, was **192,337** in **Carmarthenshire**.
- The total number of cattle registered in **Carmarthenshire** for 2011 was **190,891**, according to the Welsh Agricultural Small Area Statistics (2011).
- There were **3,038** full time principle farmers in the county during 2011.

Further detailed information on all of these themes and sectors can be found within the online Regional Learning and Skills Observatory for South West and Central Wales.

<http://www.rlpsww.org.uk/>



Ceredigion

Key statistics and data for Ceredigion during the winter months of 2012 are detailed in the following pages.

Figures from ONS on the 30th of June 2011 stated there were **75,293** people living in Ceredigion.



Ceredigion's Population Age Range

Below is an age structure profile for the population of Ceredigion, according to the ONS on the 30th of June 2011.

| Age Category | Actual Figure | Percentage | Wales Comparator |
|---|---------------|------------|------------------|
| Total Population | 75,293 | N/A | 3,063,758 |
| Number of people aged between 0 and 4 years | 3,432 | 4.6% | 5.8% |
| Number of people aged between 0 and 15 years | 11,165 | 14.8% | 18.1% |
| Number of people aged between 5 and 15 years | 7,733 | 10.3% | 12.3% |
| Number of people aged between 16 and 24 years | 13,706 | 18.2% | 12.2% |
| Number of people aged between 16 and 29 years | 17,245 | 22.9% | 18.2% |
| Number of people aged between 16 and 64 years | 48,353 | 64.2% | 63.4% |
| Number of people aged over 65+ years | 15,775 | 21.0% | 18.5% |



Tourism (STEAM 2011 Statistics)

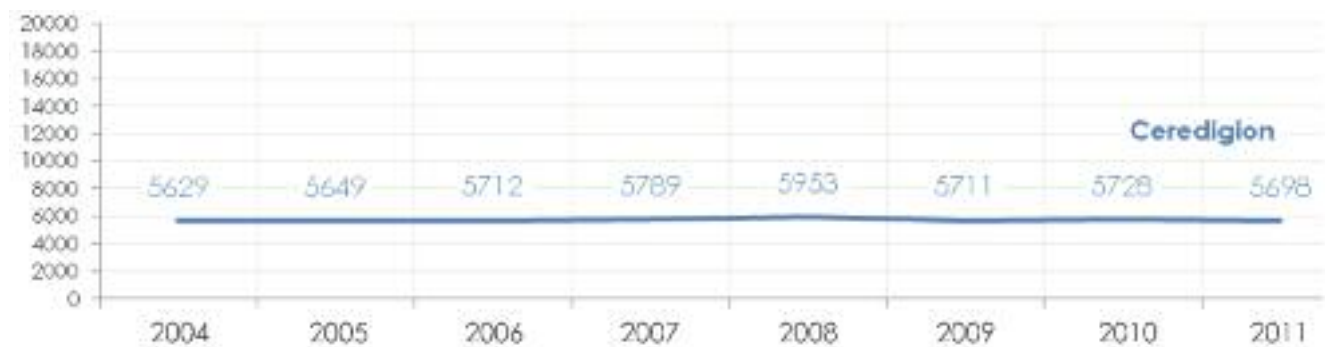
Below are some key statistics taken from the Scarborough Tourism Economic Activity Monitor Assessment (STEAM) reports for 2011. These reports are published annually for each county and can be found on the RLSO website.

Employment

According to the STEAM reports for 2011, the total number of people in full time equivalent jobs, in the tourism industry in Ceredigion during 2011 was **5,698**. The table below breaks down some of the key sub-sectors in which these people were employed.

| % in Accommodation | % in Food & Drink | % in Recreation | % in Shopping | % in Transport |
|--------------------|-------------------|-----------------|---------------|----------------|
| 33.0% | 23.0% | 9.6% | 11.6% | 4.4% |

The chart below shows how this figure has varied since 2004



Expenditure

The total expenditure in the tourism sector in Ceredigion during 2011 was **£299 million (2011 £'s millions)**. The table below breaks down the expenditure (by %) within the sub-sectors.

| % in Accommodation | % in Food & Drink | % in Recreation | % in Shopping | % in Transport |
|--------------------|-------------------|-----------------|---------------|----------------|
| 14.4% | 20.6% | 7.1% | 11.3% | 8.9% |



Tourist Numbers

The total tourist numbers in Ceredigion during 2011 was **2,757,000**. The table below breaks down some of the key areas in which this total expenditure was incurred.

| % staying in Serviced Accommodation | % staying in non- Serviced Accommodation | % staying with friends or family | % day visitors |
|-------------------------------------|--|----------------------------------|----------------|
| 9.1% | 37.1% | 4.3% | 49.5% |

Benefits

The most recent quarterly data, (*Department of Work & Pensions – August 2012*) shows that **5,800** people of working age claimed benefits within Ceredigion.

Here is a breakdown of the benefits claimed in Ceredigion during the **August 2012** quarter;

| Type of Benefit | Percentage of total benefits claimed | Actual figure | Regional Percentage |
|---|--------------------------------------|---------------|---------------------|
| ESA, Incapacity Benefits or Severe Disablement Allowance | 54.7% | 3,170 | 52.5% |
| Disability Living Allowance, Attendance Allowance or Industrial Injuries Benefits | 9.8% | 570 | 8.5% |
| JSA | 15.2% | 880 | 18.1% |
| Income Support with a child under 16 and no partner | 5.5% | 320 | 7.3% |
| Carer's Allowance | 10.0% | 580 | 9.9% |
| Other Income Support (Including IS Disability Premium) or Pension Credit | 3.1% | 180 | 2.5% |
| Widow's Benefit, Bereavement Benefit or Industrial Death Benefit | 1.6% | 90 | 1.2% |

Monthly data for **February 2013** shows that there were a total of **1,020** (2.1% of the total working age population) people claiming JSA in Ceredigion.



The table below shows the trend of how these figures have varied over the winter months;

| December 2012 | | January 2013 | | February 2013 | |
|---------------------|-----------------------------|---------------------|-----------------------------|---------------------|-----------------------------|
| Total JSA Claimants | % of working age population | Total JSA Claimants | % of working age population | Total JSA Claimants | % of working age population |
| 954 | 1.9% | 1,000 | 2.0% | 1,020 | 2.1% |

The number of people **aged between 17 and 24** in the county, who were claiming JSA during the winter months was **965**.

The table below shows the trend of how these figures have varied over the winter months;

| December 2012 | | January 2013 | | February 2013 | |
|-------------------------------------|---|-------------------------------------|---|-------------------------------------|---|
| Total JSA Claimants (Aged 17 to 24) | % of total JSA claimants who are aged between 17 and 24 | Total JSA Claimants (Aged 17 to 24) | % of total JSA claimants who are aged between 17 and 24 | Total JSA Claimants (Aged 17 to 24) | % of total JSA claimants who are aged between 17 and 24 |
| 320 | 33.5% | 325 | 32.5% | 320 | 31.4% |

The **LSOA** in Ceredigion which had the **most** JSA Claimants in February 2013 was **Aberteifi / Cardigan - Teifi** with **66 claimants**. The **LSOA** with the **lowest** amount of JSA Claimants was **Faenor 1** with **7 claimants**.

Vacancies

During November 2012 there were **407** vacancies in Ceredigion that were notified to JCP.

Out of the **407** vacancies, **86.0%** had been live unfilled for **less than 1 month**. **10.6%** had been live unfilled for a period of between **1 to 3 months**, whilst **1.2%** had been live unfilled for **over 2 years**.



Vacancy Breakdown

The table below shows in which industries the vacancies were during the autumn months of 2012.

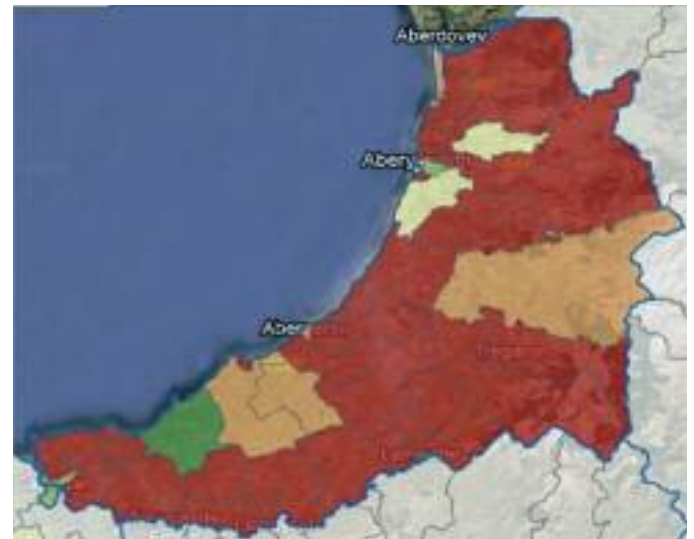
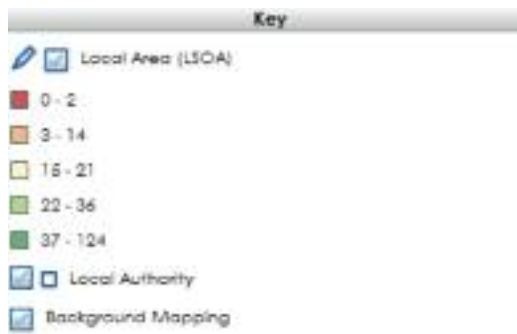
| Industry | September 2012 | | October 2012 | | November 2012 | |
|--|----------------------|---------------|----------------------|---------------|----------------------|---------------|
| | % of Total Vacancies | Actual Figure | % of Total Vacancies | Actual Figure | % of Total Vacancies | Actual Figure |
| Agriculture & Fishing | 0.7% | 2 | 0.5% | 1 | 0.2% | 1 |
| Energy & Water | 5.4% | 16 | 0.0% | 0 | 0.0% | 0 |
| Manufacturing | 1.0% | 3 | 0.5% | 1 | 0.0% | 0 |
| Construction | 5.1% | 15 | 1.0% | 2 | 1.2% | 5 |
| Distribution, Hotels & Restaurants | 23.0% | 68 | 24.8% | 51 | 24.8% | 101 |
| Transport & Communications | 3.4% | 10 | 2.9% | 6 | 2.2% | 9 |
| * Banking, Finance & Insurance | 35.8% | 106 | 38.3% | 79 | 51.8% | 211 |
| Public Administration, Education & Health | 23.0% | 68 | 26.2% | 54 | 14.5% | 59 |
| Other Services | 2.7% | 8 | 5.8% | 12 | 5.2% | 21 |
| TOTAL | | 296 | | 206 | | 407 |

* Figures contained in the 'Banking, Finance, Insurance' indicator are influenced by the fact that recruitment agency jobs notified to JCP are coded under the heading (irrespective of what industry the job is actually in)

The number of vacancies notified to JCP is estimated to represent 19% of total vacancies in the job market (JCP)



Distribution of Vacancies across Ceredigion



This map from the RLSO shows how vacancies were distributed across every ward in Ceredigion during **November 2012**. The key shown above refers to the number of vacancies. For example, the areas shown as red in the map only had between **0-2** vacancies during **November 2012**.

Vacancies by Ward

The table below groups each ward in Ceredigion in relation to the number of vacancies reported during the month of November 2012.

| LSOA's | | Number of vacancies |
|---|---|---------------------|
| <ul style="list-style-type: none"> • Aberporth 1 • Aberporth 2 • Aberteifi/Cardigan • Aberystwyth North • Aberystwyth Penparcau (1 and 2) • Beulah • Borth 1 • Capel Dewi • Ceulanamaesmawr • Ciliau Aeron • Faenor 1 • Faenor 2 • Lampeter 2 • Llandyfriog • Llandysul Town | <ul style="list-style-type: none"> • Llanfihangel Ystrad • Llangeitho • Llanybi • Llanrhystud • Llansantffraed (1 and 2) • Llanwenog • Melindwr • New Quay • Pen-parc (1 and 2) • Tirymynach • Tregaron • Troedyraur • Ystwyth | 0-2 |



Vacancies by Ward (continued)

| LSOA's | | Number of vacancies |
|---|--|---------------------|
| <ul style="list-style-type: none"> • Aberaeron • Borth 2 • Llanarth | <ul style="list-style-type: none"> • Llandysiliogogoch • Lledrod | 3-14 |
| <ul style="list-style-type: none"> • Aberystwyth Bronglais • Aberystwyth Rheidol (1 and 2) | <ul style="list-style-type: none"> • Llanfarian • Trefeurig | 15-21 |
| <ul style="list-style-type: none"> • Aberteifi Cardigan - Rhyd y fuwch • Aberteifi Cardigan - Teifi • Padarn & Llanbadarn fawr | | 22-36 |
| <ul style="list-style-type: none"> • Aberystwyth Central • Lampeter 1 • Penbryn | | 37-124 |

To find out more detailed information regarding vacancies in South West and Central Wales follow the link below;

<http://rlp.infobasecymru.net/IAS/dataviews/tabular?viewId=599&geold=1&subsetId=42>



Destinations Data (2012)

The table below presents the results from the Careers Wales Year 11, 12 and 13 School Leavers Destinations survey (2012).

| | Year 11 | Year 12 | Year 13 |
|---------------------------------|------------|------------|------------|
| Continued in college | 156 | 64 | 46 |
| Continued in school | 460 | 409 | 26 |
| Continued into higher education | 0 | 0 | 234 |
| Gap year | 0 | 0 | 5 |
| Part time education | 2 | 1 | 0 |
| Employed | 18 | 10 | 74 |
| NEET | 16 | 12 | 18 |
| WBT – Employed | 11 | 4 | 6 |
| WBT – Non-employed | 21 | 9 | 5 |
| No response | 0 | 1 | 2 |
| Moved away | 6 | 6 | 5 |
| Total Numbers | 690 | 516 | 421 |

Pupil Numbers and Schools

According to the latest data from the annual year 2011/2012, there are **5,026** pupils in primary schools in Ceredigion (WAG-PLASC data), distributed across **57** schools throughout the county.

There are **4,629** pupils in secondary schools in the county. This total is distributed across **7** secondary schools.

For the annual year period 2011-2012, a total of **13.2%** of all primary school pupils in Ceredigion, were classified as being **eligible for free school meals (18.8 % for Wales)**.

9.9% of all secondary school pupils in the county were classified as being **eligible for free school meals** for the annual year 2011-2012 (**15.8 % for Wales**).

The **Pupil Teacher Ratio** for LEA maintained **primary** schools for the annual year 2011-2012 in Ceredigion was **17.1** (Wales Figure was 20.7). The figure for LEA maintained secondary schools was **14.9** (Wales Figure 16.7).

81.7% of relevant pupils in the annual year 2011-2012 achieved the expected level in Key Stage 3 (Level 5+) in Ceredigion. This is in comparison to the national figure which was **72.5%**.

There were **0 Permanent Exclusions** from secondary schools in Ceredigion in 2011-2012.



Other key facts about Ceredigion contained within the Observatory

Local Authority Finance

- According to data provided by Welsh Government, the gross revenue expenditure on **Social Services** (£ per head) during **2012-2013** in **Ceredigion** was **£451** (*Expenditure covers children and families services, including children's homes, fostering and adoptive services, home care and nursing homes, care for the elderly, care for people with physical, mental or learning disabilities, asylum seekers and substance misuse*).
- The gross revenue expenditure on **Education** (£ per head) during **2012-2013** in **Ceredigion** was **£829** (*Expenditure covers individual school's budget, additional learning needs, inter authority recoupment, staff, school improvements and access to education*).

Economy

- Out of a total **9,100** companies in **Ceredigion** in 2011 **0.7%** were foreign owned according to the Welsh Government Regional Economic Labour Market Profile.
- **4.0%** of employees in **Ceredigion** during 2011 were working within foreign owned companies with the remaining **95.6%** working within UK owned companies.

Energy & Environment

- According to figures published for the June 2012 quarter, **814** households had domestic solar photovoltaic installations in **Ceredigion**.
- In 2011, the total consumption of domestic electricity and gas in the county was **274,719mWh**, which is a **5.3% decrease** on figures relating to 2010.

Agriculture

- The Welsh Agricultural Small Area Statistics (2011) states that the total area farmed, in hectares, was **147,631** in **Ceredigion**.
- The total number of cattle registered in **Ceredigion** for 2011 was **107,240**, according to the Welsh Agricultural Small Area Statistics (2011).
- There were **2,058** full time principle farmers in the county during 2011.

Further detailed information on all of these themes and sectors can be found within the online Regional Learning and Skills Observatory for South West and Central Wales.

<http://www.rlpsww.org.uk/>



Neath Port Talbot

Key statistics and data for Neath Port Talbot during the winter months of 2012 are detailed in the following pages.

Figures from ONS on the 30th of June 2011 stated that there were **139,880** people living in Neath Port Talbot.



Neath Port Talbot's Population Age Range

Below is an age structure profile for the population of Neath Port Talbot, according to the ONS on the 30th of June 2011.

| Age Category | Actual Figure | Percentage | Wales Comparator |
|---|----------------|------------|------------------|
| Total Population | 139,880 | N/A | 3,063,758 |
| Number of people aged between 0 and 4 years | 7,661 | 5.5% | 5.8% |
| Number of people aged between 0 and 15 years | 24,674 | 17.6% | 18.1% |
| Number of people aged between 5 and 15 years | 17,013 | 12.2% | 12.3% |
| Number of people aged between 16 and 24 years | 14,824 | 10.6% | 12.2% |
| Number of people aged between 16 and 29 years | 23,562 | 16.8% | 18.2% |
| Number of people aged between 16 and 64 years | 89,002 | 63.6% | 63.4% |
| Number of people aged over 65+ years | 26,204 | 18.7% | 18.5% |



Tourism (STEAM 2011 Statistics)

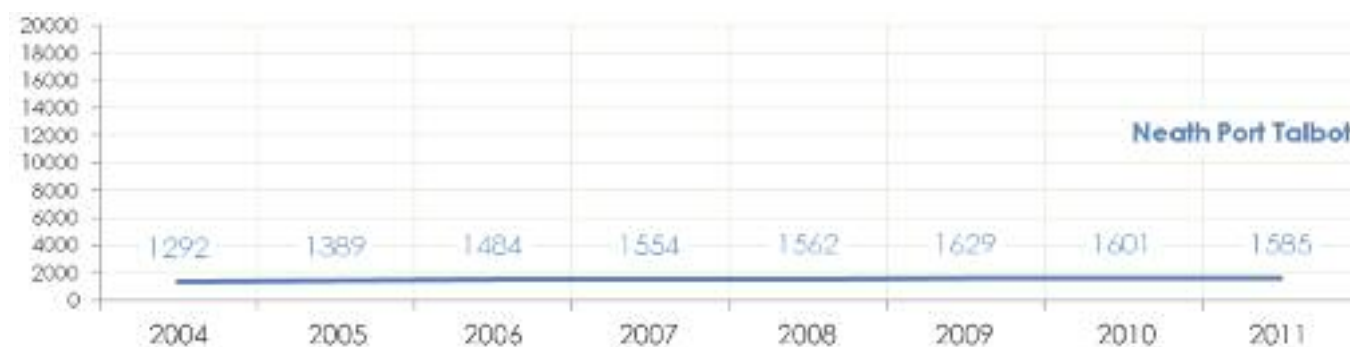
Below are some key statistics taken from the STEAM reports for 2011. These reports are published annually for each county and can be found on the RLSO.

Employment

According to the STEAM reports for 2011, the total number of people in full time equivalent jobs in the tourism industry in Neath Port Talbot during 2011 was **1,585**. The table below breaks down some of the key sub-sectors in which these people were employed.

| % in Accommodation | % in Food & Drink | % in Recreation | % in Shopping | % in Transport |
|--------------------|-------------------|-----------------|---------------|----------------|
| 19.7% | 21.4% | 11.3% | 15.3% | 6.6% |

The chart below shows how this figure has varied since 2004



Expenditure

The total expenditure in the tourism sector in Neath Port Talbot during 2011 was **£92 million (2011 £'s millions)**. The table below breaks down the expenditure (by %) within the sub-sectors.

| % in Accommodation | % in Food & Drink | % in Recreation | % in Shopping | % in Transport |
|--------------------|-------------------|-----------------|---------------|----------------|
| 6.5% | 17.3% | 7.5% | 13.5% | 12.0% |



Tourist Numbers

The total tourist numbers in Neath Port Talbot during 2011 was **1,374,000**. The table below breaks down some of the key areas in which this total expenditure was incurred.

| % staying in Serviced Accommodation | % staying in non- Serviced Accommodation | % staying with friends or family | % day visitors |
|-------------------------------------|--|----------------------------------|----------------|
| 5.5% | 2.2% | 15.4% | 76.9% |

Benefits

The most recent quarterly data, (*Department of Work & Pensions – August 2012*) shows that **20,510** people of working age, claimed benefits within Neath Port Talbot.

Here is a breakdown of the benefits claimed in Neath Port Talbot during the **August 2012** quarter;

| Type of Benefit | Percentage of total benefits claimed | Actual figure | Regional Percentage |
|--|--------------------------------------|---------------|---------------------|
| ESA, Incapacity Benefits or Severe Disablement Allowance | 55.0% | 11,290 | 52.5% |
| Disability Living Allowance, Attendance Allowance or Industrial Injuries Benefits | 8.0% | 1,640 | 8.5% |
| JSA | 15.9% | 3,270 | 18.1% |
| Income Support with a child under 16 and no partner | 7.4% | 1,510 | 7.3% |
| Carer's Allowance | 10.5% | 2,160 | 9.9% |
| Other Income Support (Including IS Disability Premium) or Pension Credit | 2.2% | 460 | 2.5% |
| Widow's Benefit, Bereavement Benefit or Industrial Death Benefit | 0.8% | 170 | 1.2% |

Monthly data for **February 2013** shows that there were a total of **3,594** (4.1% of the total working age population) people claiming JSA in Neath Port Talbot.



The table below shows the trend of how these figures have varied over the winter months;

| December 2012 | | January 2013 | | February 2013 | |
|---------------------|-----------------------------|---------------------|-----------------------------|---------------------|-----------------------------|
| Total JSA Claimants | % of working age population | Total JSA Claimants | % of working age population | Total JSA Claimants | % of working age population |
| 2,985 | 3.4% | 3,468 | 4.0% | 3,594 | 4.1% |

The number of people **aged between 17 and 24** in the county, who were claiming JSA during the winter months was **3,390**.

The table below shows the trend of how these figures have varied over the winter months;

| December 2012 | | January 2013 | | February 2013 | |
|-------------------------------------|---|-------------------------------------|---|-------------------------------------|---|
| Total JSA Claimants (Aged 17 to 24) | % of total JSA claimants who are aged between 17 and 24 | Total JSA Claimants (Aged 17 to 24) | % of total JSA claimants who are aged between 17 and 24 | Total JSA Claimants (Aged 17 to 24) | % of total JSA claimants who are aged between 17 and 24 |
| 985 | 33.0% | 1,185 | 34.2% | 1,220 | 33.9% |

The **LSOA** in Neath Port Talbot which had the **most** JSA Claimants in February 2013 was **Aberavon 4** with **79 claimants**. The **LSOA** with the **lowest** amount of JSA Claimants was **Bryn-coch North 1** with **8 claimants**.

Vacancies

During November 2012 there were **1,379** vacancies in Neath Port Talbot that were notified to JCP.

Out of the **1,379** vacancies **70.6%** had been live unfilled for **less than 1 month**. **20.8%** had been live unfilled for a period of between **1 to 3 months**, whilst **8.6%** had been live unfilled between **3 and 6 months**. There were no vacancies left unfilled for a period of longer than 6 months in Neath Port Talbot during this time.



Vacancy Breakdown

The table below shows in which industries the vacancies were during the autumn months of 2012.

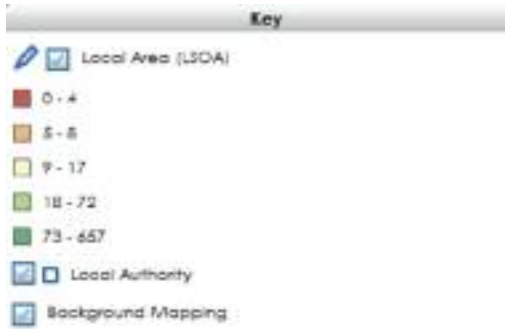
| Industry | September 2012 | | October 2012 | | November 2012 | |
|--|----------------------|---------------|----------------------|---------------|----------------------|---------------|
| | % of Total Vacancies | Actual Figure | % of Total Vacancies | Actual Figure | % of Total Vacancies | Actual Figure |
| Agriculture & Fishing | 0.3% | 4 | 1.4% | 20 | 1.3% | 18 |
| Energy & Water | 0.6% | 8 | 0.0% | 0 | 0.4% | 5 |
| Manufacturing | 0.7% | 10 | 2.9% | 41 | 0.8% | 11 |
| Construction | 2.4% | 34 | 4.1% | 57 | 2.2% | 30 |
| Distribution, Hotels & Restaurants | 2.2% | 32 | 6.0% | 84 | 5.1% | 70 |
| Transport & Communications | 1.0% | 15 | 0.1% | 1 | 0.3% | 4 |
| * Banking, Finance & Insurance | 87.2% | 1,252 | 76.5% | 1,070 | 84.1% | 1,160 |
| Public Administration, Education & Health | 4.7% | 68 | 7.3% | 102 | 4.0% | 55 |
| Other Services | 0.8% | 12 | 1.6% | 23 | 1.9% | 26 |
| TOTAL | | 1,435 | | 1,398 | | 1,379 |

* Figures contained in the 'Banking, Finance, Insurance' indicator are influenced by the fact that recruitment agency jobs notified to JCP are coded under the heading (irrespective of what industry the job is actually in)

The number of vacancies notified to JCP is estimated to represent 19% of total vacancies in the job market (JCP)



Distribution of Vacancies across Neath Port Talbot



This map from the RLSO shows how vacancies were distributed across every ward in Neath Port Talbot during **November 2012**. The key shown above refers to the number of vacancies.

For example, the areas shown as red in the map only had between **0-3** vacancies during **November 2012**.

Vacancies by Ward

The table below groups each ward in Neath Port Talbot in relation to the number of vacancies reported during the month of **November 2012**.

| LSOA's | | Number of vacancies |
|---|--|---------------------|
| <ul style="list-style-type: none"> • Aberavon (2 and 4) • Allt-wen • Baglan (2 and 3) • Blaengwrach • Briton Ferry East 1 • Briton Ferry West 1 • Bryn & Cwmavon (1,3 and 4) • Bryn-coch North (1 and 2) • Bryn-coch South (2 and 4) • Cadoxton • Cimla (1,2 and 3) • Coedffranc central (1 and 3) • Coedffranc North 1 • Crynant • Cwmllynfell • Cymmer • Dyffryn 2 | <ul style="list-style-type: none"> • Glynchorwg • Glynneath 1 • Gwaun cae Gurwen (1 and 2) • Gwynfi • Lower Brynamman • Neath East (1,2 and 3) • Neath North 3 • Neath South (2 and 3) • Onllwyn • Pelenna • Port Talbot (1,2 and 4) • Resolven (1 and 2) • Rhos (1 and 2) • Sandfields East (1,2 and 3) • Sandfields West (1,2,3 and 4) • Seven Sisters • Taibach (1 and 3) • Tonna 1 • Trebanos • Ystalyfera (1 and 2) | <p>0-4</p> |



Vacancies by Ward (continued)

| LSOA's | | Number of vacancies |
|--|--|---------------------|
| <ul style="list-style-type: none"> • Aberdulais • Bryn and Cwmavon 2 • Glynneath 2 • Margam 1 • Neath East 4 • Neath North 1 | <ul style="list-style-type: none"> • Pontardawe (1,2 and 3) • Sandfields East 4 • Tai-bach 2 • Tonna 2 | 5-8 |
| <ul style="list-style-type: none"> • Aberavon 1 • Baglan (1 and 4) • Briton Ferry East 2 • Coedffranc North 2 | <ul style="list-style-type: none"> • Godre'r Graig • Neath South 1 | 9-17 |
| <ul style="list-style-type: none"> • Aberavon 3 • Briton Ferry West 2 • Bryn-coch south 3 • Dyffryn 1 • Margam 2 | | 18-72 |
| <ul style="list-style-type: none"> • Coedffranc Central 2 • Coedffranc West • Neath North 2 • Port Talbot 3 | | 73-657 |

To find out more detailed information regarding vacancies in South West and Central Wales follow the link below;

<http://rlp.infobasecymru.net/IAS/dataviews/tabular?viewId=599&geold=1&subsetId=42>



Destinations Data (2012)

The table below presents the results from the Careers Wales Year 11, 12 and 13 School Leavers Destinations survey (2012).

| | Year 11 | Year 12 | Year 13 |
|---------------------------------|--------------|------------|------------|
| Continued in college | 1220 | 29 | 13 |
| Continued in school | 202 | 182 | 29 |
| Continued into higher education | 0 | 0 | 90 |
| Gap year | 0 | 0 | 2 |
| Part time education | 7 | 2 | 0 |
| Employed | 16 | 3 | 9 |
| NEET | 52 | 4 | 6 |
| WBT – Employed | 24 | 2 | 1 |
| WBT – Non-employed | 161 | 14 | 1 |
| No response | 8 | 1 | 1 |
| Moved away | 8 | 1 | 0 |
| Total Numbers | 1,698 | 238 | 152 |

Pupil Numbers and Schools

According to the latest data from the annual year 2011/2012, there are **12,149** pupils in primary schools in Neath Port Talbot (WAG-PLASC data), distributed across **68** schools throughout the county.

There are **8,370** pupils in secondary schools in the county. This total is distributed across **11** secondary schools.

For the annual year period 2011-2012, a total of **20.4%** of all primary school pupils in Neath Port Talbot were classified as being **eligible for free school meals (18.8 % for Wales)**.

20.9% of all secondary school pupils in the county were classified as being **eligible for free school meals** for the annual year 2011-2012 (**15.8 % for Wales**).

The **Pupil Teacher Ratio** for LEA maintained **primary** schools for the annual year 2011-2012, in Neath Port Talbot was **20.8** (Wales Figure was 20.7). The figure for LEA maintained secondary schools was **16.3** (Wales Figure 16.7).

68.8% of relevant pupils in the annual year 2011-2012 achieved the expected level in Key Stage 3 (Level 5+) in Neath Port Talbot. This is in comparison to the national figure which was **72.5%**.

There were **10 Permanent Exclusions** from secondary schools in Neath Port Talbot in 2011-2012.



Other key facts about Neath Port Talbot contained within the Observatory

Local Authority Finance

- According to data provided by Welsh Government, the gross revenue expenditure on **Social Services** (£ per head) during **2012-2013** in **Neath Port Talbot** was **£650** (Expenditure covers children and families services, including children's homes, fostering and adoptive services, home care and nursing homes, care for the elderly, care for people with physical, mental or learning disabilities, asylum seekers and substance misuse).
- The gross revenue expenditure on **Education** (£ per head) during 2012-2013 in **Neath Port Talbot** was **£836** (Expenditure covers individual school's budget, additional learning needs, inter authority recoupment, staff, school improvements and access to education).

Economy

- Out of a total **6,240** companies in **Neath Port Talbot** in 2011, **1.1%** were foreign owned according to the Welsh Government Regional Economic Labour Market Profile.
- **23.4%** of employees in **Neath Port Talbot** during 2011 were working within foreign owned companies with the remaining **76.3%** working within UK owned companies.

Energy & Environment

- According to figures published for the June 2012 quarter, **490** households had domestic solar photovoltaic installations in **Neath Port Talbot**.
- In 2011, the total consumption of domestic electricity and gas in the county was **1,042,805mWh**, which is a **6.3% decrease** on figures relating to 2010.

Agriculture

- The Welsh Agricultural Small Area Statistics (2011) states that the total area farmed, in hectares, was **18,658** in **Neath Port Talbot**.
- The total number of cattle registered in **Neath Port Talbot** for 2011 was **6,847**, according to the Welsh Agricultural Small Area Statistics (2011).
- There were **179** full time principle farmers in the county during 2011

Further detailed information on all of these themes and sectors can be found within the online Regional Learning and Skills Observatory for South West and Central Wales.

<http://www.rlpsww.org.uk/>



Pembrokeshire

Key statistics and data for Pembrokeshire during the winter months of 2012 are detailed in the following pages.

Figures from ONS on the 30th of June 2011 stated that there were **122,613** people living in Pembrokeshire.



Pembrokeshire's Population Age Range

Below is an age structure profile for the population of Pembrokeshire, according to the ONS on the 30th of June 2011

| Age Category | Actual Figure | Percentage | Wales Comparator |
|---|----------------|------------|------------------|
| Total Population | 122,613 | N/A | 3,063,758 |
| Number of people aged between 0 and 4 years | 6,711 | 5.5% | 5.8% |
| Number of people aged between 0 and 15 years | 22,002 | 17.9% | 18.1% |
| Number of people aged between 5 and 15 years | 15,291 | 12.5% | 12.3% |
| Number of people aged between 16 and 24 years | 12,707 | 10.4% | 12.2% |
| Number of people aged between 16 and 29 years | 18,608 | 15.2% | 18.2% |
| Number of people aged between 16 and 64 years | 73,697 | 60.1% | 63.4% |
| Number of people aged over 65+ years | 26,914 | 22.0% | 18.5% |



Tourism (STEAM 2011 Statistics)

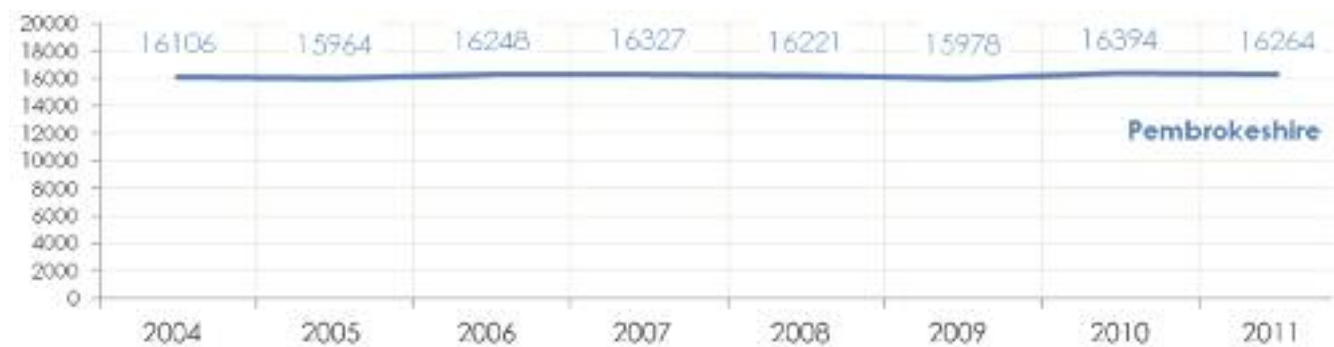
Below are some key statistics taken from the STEAM reports for 2011. These reports are published annually for each county and can be found on the RLSO website.

Employment

According to the STEAM reports for 2011, the total number of people in full time equivalent jobs, in the tourism industry in Pembrokeshire during 2011 was **16,264**. The table below breaks down some of the key sub-sectors in which these people were employed.

| % in Accommodation | % in Food & Drink | % in Recreation | % in Shopping | % in Transport |
|--------------------|-------------------|-----------------|---------------|----------------|
| 59.3% | 13.3% | 5.5% | 6.5% | 2.5% |

The chart below shows how this figure has varied since 2004



Expenditure

The total expenditure, in the tourism sector in Pembrokeshire during 2011 was **£570 million (2011 £'s millions)**. The table below breaks down the expenditure (by %) within the sub-sectors.

| % in Accommodation | % in Food & Drink | % in Recreation | % in Shopping | % in Transport |
|--------------------|-------------------|-----------------|---------------|----------------|
| 20.4% | 17.8% | 6.0% | 9.6% | 7.6% |



Tourist Numbers

The total tourist numbers, in Pembrokeshire during 2011 was **4,226,000**. The table below breaks down some of the key areas in which this total expenditure was incurred.

| % staying in Serviced Accommodation | % staying in non- Serviced Accommodation | % staying with friends or family | % day visitors |
|-------------------------------------|--|----------------------------------|----------------|
| 12.2% | 38.3% | 4.3% | 45.2% |

Benefits

The most recent quarterly data, (*Department of Work & Pensions – August 2012*) shows that **11,610** people of working age, claimed benefits within Pembrokeshire.

Here is a breakdown of the benefits claimed in Pembrokeshire during the **August 2012 quarter**;

| Type of Benefit | Percentage of total benefits claimed | Actual figure | Regional Percentage |
|--|--------------------------------------|---------------|---------------------|
| ESA, Incapacity Benefits or Severe Disablement Allowance | 48.8% | 5,660 | 52.5% |
| Disability Living Allowance, Attendance Allowance or Industrial Injuries Benefits | 8.9% | 1,030 | 8.5% |
| JSA | 19.3% | 2,240 | 18.1% |
| Income Support with a child under 16 and no partner | 8.1% | 940 | 7.3% |
| Carer's Allowance | 10.6% | 1,230 | 9.9% |
| Other Income Support (Including IS Disability Premium) or Pension Credit | 2.8% | 330 | 2.5% |
| Widow's Benefit, Bereavement Benefit or Industrial Death Benefit | 1.6% | 180 | 1.2% |

Monthly data for **February 2013** shows that there were a total of **2,666** (3.8% of the total working age population) people claiming JSA in Pembrokeshire.



The table below shows the trend of how these figures have varied over the winter months;

| December 2012 | | January 2013 | | February 2013 | |
|---------------------|-----------------------------|---------------------|-----------------------------|---------------------|-----------------------------|
| Total JSA Claimants | % of working age population | Total JSA Claimants | % of working age population | Total JSA Claimants | % of working age population |
| 2,576 | 3.7% | 2,666 | 3.8% | 2,666 | 3.8% |

The number of people **aged between 17 and 24** in the county, who were claiming JSA during the winter months was **2,310**.

The table below shows the trend of how these figures have varied over the winter months;

| December 2012 | | January 2013 | | February 2013 | |
|-------------------------------------|---|-------------------------------------|---|-------------------------------------|---|
| Total JSA Claimants (Aged 17 to 24) | % of total JSA claimants who are aged between 17 and 24 | Total JSA Claimants (Aged 17 to 24) | % of total JSA claimants who are aged between 17 and 24 | Total JSA Claimants (Aged 17 to 24) | % of total JSA claimants who are aged between 17 and 24 |
| 760 | 29.5% | 775 | 29.1% | 775 | 29.1% |

The **LSOA** in Pembrokeshire which had the **most** JSA Claimants in February 2013 was **Milford East** with **129 claimants**. The **LSOA** with the **lowest** amount of JSA Claimants was **Clydau** with **5 claimants**.

Vacancies

During November 2012, there were **609** vacancies in Pembrokeshire that were notified to JCP.

Out of the **609** vacancies **52.9%** had been live unfilled for **less than 1 month**. **46.6%** had been live unfilled for a period of between **1 to 3 months**, whilst there were no vacancies that had been live unfilled between **3 and 6 months**. **0.5%** had been live unfilled between **6 months and 1 year**.



Vacancy Breakdown

The table below shows in which industries the vacancies were during the autumn months of 2012.

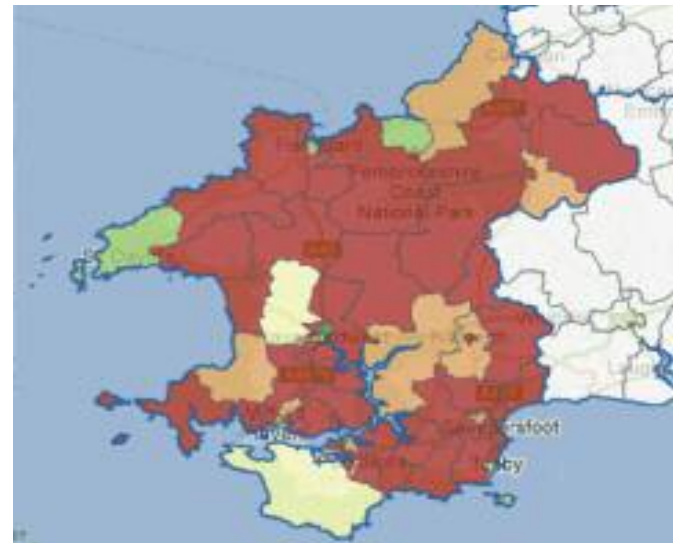
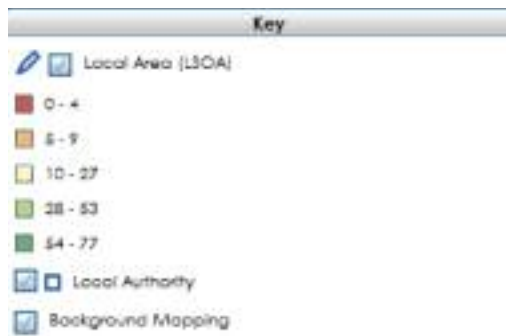
| Industry | September 2012 | | October 2012 | | November 2012 | |
|--|----------------------|---------------|----------------------|---------------|----------------------|---------------|
| | % of Total Vacancies | Actual Figure | % of Total Vacancies | Actual Figure | % of Total Vacancies | Actual Figure |
| Agriculture & Fishing | 0.3% | 2 | 0.0% | 0 | 0.5% | 3 |
| Energy & Water | 2.8% | 18 | 0.3% | 2 | 0% | 0 |
| Manufacturing | 8.1% | 53 | 0.9% | 6 | 1.6% | 10 |
| Construction | 0.9% | 6 | 1.1% | 7 | 2.1% | 13 |
| Distribution, Hotels & Restaurants | 17.4% | 114 | 14.7% | 94 | 25.1% | 153 |
| Transport & Communications | 1.2% | 8 | 2.3% | 15 | 1.8% | 11 |
| * Banking, Finance & Insurance | 39.8% | 260 | 53.4% | 342 | 48.4% | 295 |
| Public Administration, Education & Health | 27.5% | 180 | 26.4% | 169 | 19.7% | 120 |
| Other Services | 2.0% | 13 | 0.9% | 6 | 0.7% | 4 |
| TOTAL | | 654 | | 641 | | 609 |

* Figures contained in the 'Banking, Finance, Insurance' indicator are influenced by the fact that recruitment agency jobs notified to JCP are coded under the heading (irrespective of what industry the job is actually in)

The number of vacancies notified to JCP is estimated to represent 19% of total vacancies in the job market (JCP)



Distribution of Vacancies across Pembrokeshire



This map, from the RLSO, shows how vacancies were distributed across every ward in Pembrokeshire during **November 2012**.

The key shown above refers to the number of vacancies. For example, the areas shown as red in the map only had between **0-3** vacancies during **November 2012**.

Vacancies by Ward

The table below, groups each ward in Pembrokeshire in relation to the number of vacancies reported during the month of **November 2012**.

| LSOA's | | Number of vacancies |
|--|--|---------------------|
| <ul style="list-style-type: none"> • Amroth • Burton • Camrose 2 • Carew • Cilgerran • Clydau • Crymych 1 • Dinas Cross • East Williamston 1 • Fishguard North East • Goodwick • Haverfordwest: Garth (1 and 2) • Haverfordwest: Priory • Johnston • Kilgetty/Begelly • Lampeter Velfrey • Lamphey • Letterston • Llangwm • Llanrhian • Maenclochog (1 and 2) | <ul style="list-style-type: none"> • Manorbier • Merlin's Bridge • Milford East • Milford Hakin 1 • Milford Hubberston 1 • Narberth • Neyland: East and West • Pembroke Dock Market • Pembroke Dock Pennar 1 • Pembroke Monkton • Pembroke St Mary North • Pembroke St Michael • Pennally • Rudbaxton • St. Ishamels • Saundersfoot (1 and 2) • Sceddau • Solva • Tenby North • Wiston | <p>0-4</p> |



Vacancies by Ward (continued)

| LSOA's | | Number of vacancies |
|---|--|---------------------|
| <ul style="list-style-type: none"> • Crymych 2 • East Williamston 2 • Haverfordwest: Portfield • Martletwy • Milford North • Milford West | <ul style="list-style-type: none"> • Narberth Rural • Pembroke Dock: Llanion 1 • Pembroke: St Mary South • St Dogmaels • The Havens | 5-9 |
| <ul style="list-style-type: none"> • Camrose 1 • Hundleton • Milford Central • Milford Hakin 2 | | 10-27 |
| <ul style="list-style-type: none"> • Fishguard North West • Haverfordwest: Castle • Newport • St Davids • Tenby South 2 | | 28-53 |
| <ul style="list-style-type: none"> • Haverfordwest: Pendergast • Pembroke Dock Central • Pembroke Dock: Llanion 2 • Tenby South 1 | | 54-77 |

To find out more detailed information regarding vacancies in South West and Central Wales follow the link below;

<http://rlp.infobasecymru.net/IAS/dataviews/report?reportId=1&viewId=89&geoReportId=2832&geold=19&geoSubsetId=>



Destinations Data (2012)

The table below presents the results from the Careers Wales Year 11, 12 and 13 School Leavers Destinations survey (2012).

| | Year 11 | Year 12 | Year 13 |
|---------------------------------|--------------|------------|------------|
| Continued in college | 333 | 123 | 57 |
| Continued in school | 763 | 543 | 55 |
| Continued into higher education | 0 | 0 | 321 |
| Gap year | 0 | 0 | 6 |
| Part time education | 10 | 2 | 5 |
| Employed | 25 | 26 | 67 |
| NEET | 41 | 21 | 19 |
| WBT – Employed | 8 | 4 | 5 |
| WBT – Non-employed | 126 | 15 | 3 |
| No response | 1 | 0 | 1 |
| Moved away | 14 | 4 | 8 |
| Total Numbers | 1,321 | 738 | 547 |

Pupil Numbers and Schools

According to the latest data from the annual year 2011/2012 there are **10,324** pupils in primary schools in Pembrokeshire (WAG-PLASC data) distributed across **61** schools throughout the county.

There are **7,872** pupils in secondary schools in the county. This total is distributed across **8** secondary schools.

For the annual year period 2011-2012, a total of **17.6%** of all Primary School pupils in Pembrokeshire, were classified as being **eligible for free school meals (18.8 % for Wales)**.

13.6% of all secondary school pupils in the county were classified as being **eligible for free school meals** for the annual year 2011-2012 (**15.8 % for Wales**).

The **Pupil Teacher Ratio** for LEA maintained **primary** schools for the annual year 2011-2012, in Pembrokeshire was **20.1** (Wales Figure was 20.7). The figure for LEA maintained secondary schools was **17.3** (Wales Figure 16.7).

76.9% of relevant pupils in the annual year 2011-2012 achieved the expected level in Key Stage 3(Level 5+) in Pembrokeshire. This is in comparison to the national figure which was **72.5%**.



Other key facts about Pembrokeshire contained within the Observatory

Local Authority Finance

- According to data provided by Welsh Government, the gross revenue expenditure on **Social Services** (£ per head) during **2012-2013** in **Pembrokeshire** was **£477** (Expenditure covers children and families services, including children's homes, fostering and adoptive services, home care and nursing homes, care for the elderly, care for people with physical, mental or learning disabilities, asylum seekers and substance misuse).
- The gross revenue expenditure on **Education** (£ per head) during 2012-2013 in **Pembrokeshire** was **£925** (Expenditure covers individual school's budget, additional learning needs, inter authority recoupment, staff, school improvements and access to education).

Economy

- Out of a total **12,375** companies in **Pembrokeshire** in 2011 **0.6%** were foreign owned according to the Welsh Government Regional Economic Labour Market Profile.
- **7.4%** of employees in **Pembrokeshire** during 2011 were working within foreign owned companies with the remaining **92.6%** working within UK owned companies.

Energy & Environment

- According to figures published for the June 2012 quarter, **1,293** households had domestic solar photovoltaic installations in **Pembrokeshire**.
- In 2011, the total consumption of domestic electricity and gas in the county was **662,117mWh**, which is a **6.6% decrease** on figures relating to 2010.

Agriculture

- The Welsh Agricultural Small Area Statistics (2011) states that the total area farmed, in hectares, was **136,801** in **Pembrokeshire**.
- The total number of cattle registered in **Pembrokeshire** for 2011 was **175,601**, according to the Welsh Agricultural Small Area Statistics (2011).
- There were **1,860** full time principle farmers in the county during 2011.

Further detailed information on all of these themes and sectors can be found within the online Regional Learning and Skills Observatory for South West and Central Wales.
<http://www.rlpsww.org.uk/>



Powys

Key statistics and data for Powys during the winter months of 2012 are detailed in the following pages.

Figures from ONS on the 30th of June 2011 stated that there were **133,071** people living in Powys.



Powys's Population Age Range

Below is an age structure profile for the population of Powys, according to the ONS on the 30th of June 2011.

| Age Category | Actual Figure | Percentage | Wales Comparator |
|---|----------------|------------|------------------|
| Total Population | 133,071 | N/A | 3,063,758 |
| Number of people aged between 0 and 4 years | 6,561 | 4.9% | 5.8% |
| Number of people aged between 0 and 15 years | 22,761 | 17.1% | 18.1% |
| Number of people aged between 5 and 15 years | 16,200 | 12.2% | 12.3% |
| Number of people aged between 16 and 24 years | 12,823 | 9.6% | 12.2% |
| Number of people aged between 16 and 29 years | 18,713 | 14.1% | 18.2% |
| Number of people aged between 16 and 64 years | 79,783 | 60% | 63.4% |
| Number of people aged over 65+ years | 30,527 | 22.9% | 18.5% |



Tourism (STEAM 2011 Statistics)

Below are some key statistics taken from the STEAM reports for 2011. These reports are published annually for each county and can be found on the RLSO website.

Employment

According to the STEAM reports for 2011, the total number of people in full time equivalent jobs in the tourism industry in Powys during 2011 was **12,327**. The table below breaks down some of the key sub-sectors in which these people were employed.

| % in Accommodation | % in Food & Drink | % in Recreation | % in Shopping | % in Transport |
|--------------------|-------------------|-----------------|---------------|----------------|
| 27.4% | 21.4% | 8.9% | 15.0% | 7.6% |

Expenditure

The total expenditure, in the tourism sector in Powys during 2011 was **£698 million (2011 £'s millions)**. The table below breaks down the expenditure (by %) within the sub-sectors.

| % in Accommodation | % in Food & Drink | % in Recreation | % in Shopping | % in Transport |
|--------------------|-------------------|-----------------|---------------|----------------|
| 11% | 17.7% | 6.0% | 13.6% | 14.1% |

Tourist Numbers

The total tourist numbers in Powys during 2011 was **4,500,000**. The table below breaks down some of the key areas in which this total expenditure was incurred.

| % staying in Serviced Accommodation | % staying in non- Serviced Accommodation | % staying with friends or family | % day visitors |
|-------------------------------------|--|----------------------------------|----------------|
| 8.9% | 20.0% | 4.4% | 66.7% |



Benefits

The most recent quarterly data, (*Department of Work & Pensions – August 2012*) shows that **10,110** people of working age claimed benefits within Powys.

Here is a breakdown of the benefits claimed in Powys during the **August 2012 quarter**;

| Type of Benefit | Percentage of total benefits claimed | Actual figure | Regional Percentage |
|--|--------------------------------------|---------------|---------------------|
| ESA, Incapacity Benefits or Severe Disablement Allowance | 49.8% | 5,030 | 52.5% |
| Disability Living Allowance, Attendance Allowance or Industrial Injuries Benefits | 10.1% | 1,020 | 8.5% |
| JSA | 18.3% | 1,850 | 18.1% |
| Income Support with a child under 16 and no partner | 6.4% | 650 | 7.3% |
| Carer's Allowance | 10.2% | 1,030 | 9.9% |
| Other Income Support (Including IS Disability Premium) or Pension Credit | 3.1% | 310 | 2.5% |
| Widow's Benefit, Bereavement Benefit or Industrial Death Benefit | 2.1% | 210 | 1.2% |

Monthly data for **February 2013** shows that there were a total of **2,049** (2.6% of the total working age population), people claiming JSA in Powys.

The table below shows the trend of how these figures have varied over the winter months;

| December 2012 | | January 2013 | | February 2013 | |
|---------------------|-----------------------------|---------------------|-----------------------------|---------------------|-----------------------------|
| Total JSA Claimants | % of working age population | Total JSA Claimants | % of working age population | Total JSA Claimants | % of working age population |
| 1,943 | 2.5% | 2,010 | 2.6% | 2,049 | 2.6% |



The number of people **aged between 17 and 24** in the county who were claiming JSA during the winter months was **1,810**.

The table below shows the trend of how these figures have varied over the winter months;

| December 2012 | | January 2013 | | February 2013 | |
|-------------------------------------|---|-------------------------------------|---|-------------------------------------|---|
| Total JSA Claimants (Aged 17 to 24) | % of total JSA claimants who are aged between 17 and 24 | Total JSA Claimants (Aged 17 to 24) | % of total JSA claimants who are aged between 17 and 24 | Total JSA Claimants (Aged 17 to 24) | % of total JSA claimants who are aged between 17 and 24 |
| 600 | 30.9% | 590 | 29.4% | 620 | 30.3% |

The **LSOA's** in Powys which had the **most** JSA Claimants in February 2013 were **Newtown East and Newtown South** with **80 claimants**. The **LSOA's** with the **lowest** amount of JSA Claimants were **Felin-fâch, Llandinam and Builth 2** with **5 claimants each**.



Vacancies

During November 2012 there were **849** vacancies in Powys that were notified to JCP.

Out of the **849** vacancies **74.7%** had been live unfilled for **less than 1 month**. **24.7%** had been live unfilled for a period of between **1 to 3 months**, **0.5%** between 3 and 6 months and **0.1%** between **6 months and 1 year**.

Vacancy Breakdown

The table below shows in which industries the vacancies were during the autumn months of 2012.

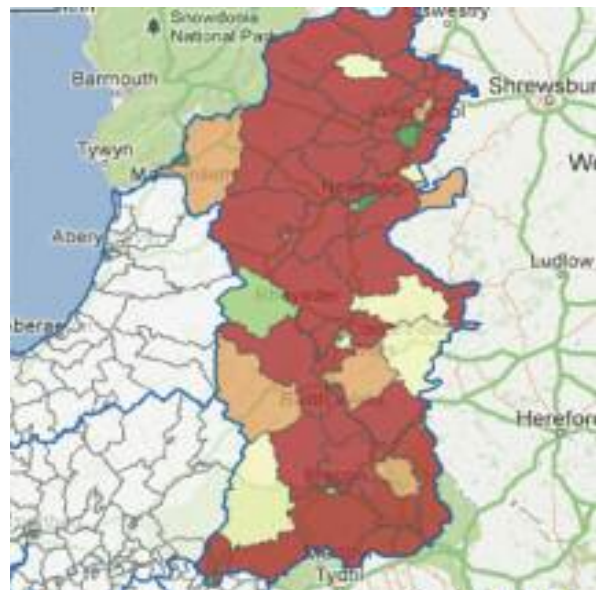
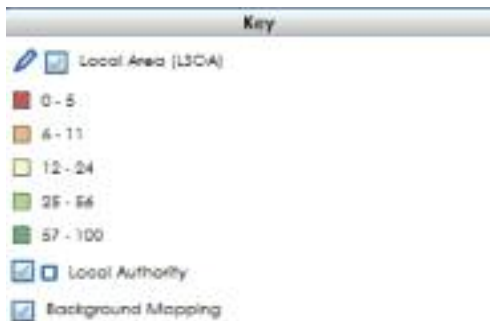
| Industry | September 2012 | | October 2012 | | November 2012 | |
|---|----------------------|---------------|----------------------|---------------|----------------------|---------------|
| | % of Total Vacancies | Actual Figure | % of Total Vacancies | Actual Figure | % of Total Vacancies | Actual Figure |
| Agriculture & Fishing | 0.1% | 1 | 0.4% | 3 | 0.1% | 1 |
| Energy & Water | 1.4% | 10 | 1.6% | 11 | 0.0% | 0 |
| Manufacturing | 6.8% | 47 | 7.6% | 51 | 0.9% | 8 |
| Construction | 0.7% | 5 | 0.0% | 0 | 0.5% | 4 |
| Distribution, Hotels & Restaurants | 18.0% | 125 | 16.5% | 111 | 36.2% | 307 |
| Transport & Communications | 0.9% | 6 | 0.3% | 2 | 0.7% | 6 |
| * Banking, Finance & Insurance | 41.2% | 286 | 49.7% | 335 | 42.6% | 362 |
| Public Administration, Education & Health | 29.4% | 204 | 22.6% | 152 | 16.1% | 137 |
| Other Services | 1.6% | 11 | 1.3% | 9 | 2.8% | 24 |
| TOTAL | | 695 | | 674 | | 849 |

* Figures contained in the 'Banking, Finance, Insurance' indicator are influenced by the fact that recruitment agency jobs notified to JCP are coded under the heading (irrespective of what industry the job is actually in)

The number of vacancies notified to JCP is estimated to represent 19% of total vacancies in the job market (JCP)



Distribution of Vacancies across Powys



This map, from the RLSO, shows how vacancies were distributed across every ward in Powys during **November 2012**. The key shown above refers to the number of vacancies. For example, the areas shown as red in the map only had between **0-5** vacancies during **November 2012**.

Vacancies by Ward

The table below groups each ward in Powys in relation to the number of vacancies reported during the month of **November 2012**.

| LSOA's | | Number of vacancies |
|---|---|---------------------|
| <ul style="list-style-type: none"> • Aber-craf • Beguildy • Berriew • Blaen Hafren • Bronllys • Builth 2 • Caersws • Crickhowell (1 and 2) • Cwm-twrch • Disserth and Trecoed • Dolforwyn • Felin-fach • Forden • Glasbury • Guilsfield • Gwernyfed • Kerry • Knighton (1 and 2) • Lanafanfawr • Lanbadarn Fawr • Llandinam • Llandrinio • Llandysilio | <ul style="list-style-type: none"> • Llanfair Caerneinion • Llangattock • Llangors and Bwlch • Llangynidr • Llanidloes 2 • Llanrhaeadr-ym-Mochnant • Llansantffraid • Llanyre • Meifod & Llanfihangel • Nantmel • Newtown Central (1 and 2) • Newtown Llanllwchaiarn • Presteigne 1 • Rhiwcynon • St.John (1 and 2) • St Mary 2 • Talybont-on-Usk • Tawe-Uchaf • Trewern • Welshpool Llanerchydol • Yscir • Ystradgynlais (1 and 2) | 0-5 |



Vacancies by Ward (continued)

| LSOA's | | Number of vacancies |
|---|--|---------------------|
| <ul style="list-style-type: none"> • Churchstoke • Glantwymyn • Hay • Llandrindod North • Llanidloes 1 | <ul style="list-style-type: none"> • Llanwrtyd Wells • Presteigne 2 • Talgarth • Welshpool Gungrog 2 | 6-11 |
| <ul style="list-style-type: none"> • Llandrindod South • Llanfyllin • Llangunllo | <ul style="list-style-type: none"> • Maescar/Llywel • Montgomery • Old Radnor | 12-24 |
| <ul style="list-style-type: none"> • Builth 1 • Llandrindod East • Newtown South | <ul style="list-style-type: none"> • Rhayader • St.David Within • St. Mary 1 | 25-56 |
| <ul style="list-style-type: none"> • Machynlleth • Newtown East • Welshpool Castle | <ul style="list-style-type: none"> • Welshpool Gungrog 1 • Ynyscedwyn | 57-100 |

To find out more detailed information regarding vacancies in South West and Central Wales follow the link below;

<http://rlp.infobasecymru.net/IAS/dataviews/report?reportId=1&viewId=89&geoReportId=2832&geold=19&geoSubsetId=>



Destinations Data (2012)

The table below presents the results from the Careers Wales Year 11, 12 and 13 School Leavers Destinations survey (2012).

| | Year 11 | Year 12 | Year 13 |
|---------------------------------|--------------|------------|------------|
| Continued in college | 616 | 59 | 52 |
| Continued in school | 737 | 673 | 39 |
| Continued into higher education | 0 | 0 | 433 |
| Gap year | 0 | 0 | 6 |
| Part time education | 6 | 2 | 2 |
| Employed | 39 | 10 | 70 |
| NEET | 34 | 12 | 20 |
| WBT – Employed | 20 | 3 | 6 |
| WBT – Non-employed | 28 | 5 | 0 |
| No response | 25 | 10 | 22 |
| Moved away | 58 | 7 | 9 |
| Total Numbers | 1,563 | 781 | 659 |

Pupil Numbers and Schools

According to the latest data from the annual year 2011/2012, there are **10,249** pupils in primary schools in Powys (WAG-PLASC data), distributed across **99** schools throughout the county.

There are **8,490** pupils in secondary schools in the county. This total is distributed across **13** secondary schools.

For the annual year period 2011-2012, a total of **11.9%** of all Primary School pupils in Powys, were classified as being **eligible for free school meals (18.8 % for Wales)**.

8.3% of all Secondary School pupils in the county were classified as being **eligible for free school meals** for the annual year 2011-2012 (**15.8 % for Wales**).

The **Pupil Teacher Ratio** for LEA maintained **primary** schools for the annual year 2011-2012, in Powys was **18.9** (Wales Figure was 20.7). The figure for LEA maintained secondary schools was **15.9** (Wales Figure 16.7).

76.8% of relevant pupils in the annual year 2011-2012 achieved the expected level in Key Stage 3 (Level 5+) in Powys. This is in comparison to the national figure which was **72.5%**.

There were **10 Permanent Exclusions** from secondary schools in Powys in 2011-2012.



Other key facts about Powys contained within the Observatory

Local Authority Finance

- According to data provided by Welsh Government, the gross revenue expenditure on **Social Services** (£ per head) during **2012-2013** in **Powys** was **£516** (*Expenditure covers children and families services, including children's homes, fostering and adoptive services, home care and nursing homes, care for the elderly, care for people with physical, mental or learning disabilities, asylum seekers and substance misuse*).
- The gross revenue expenditure on **Education** (£ per head) during **2012-2013** in **Powys** was **£866** (*Expenditure covers individual school's budget, additional learning needs, inter authority recoupment, staff, school improvements and access to education*).

Economy

- Out of a total **14,745** companies in **Powys** in 2011, **0.4%** were foreign owned according to the Welsh Government Regional Economic Labour Market Profile.
- **5.6%** of employees in **Powys** during 2011 were working within foreign owned companies with the remaining **94.4%** working within UK owned companies).

Energy & Environment

- According to figures published for the June 2012 quarter, **1,624** households had domestic solar photovoltaic installations in **Powys**.
- In 2011, the total consumption of domestic electricity and gas in the county was **629,409mWh**, which is a **6.3% decrease** on figures relating to 2010.

Agriculture

- The Welsh Agricultural Small Area Statistics (2011) states that the total area farmed, in hectares, was **390,348** in **Powys**.
- The total number of cattle registered in **Powys** for 2011 was **204,069**, according to the Welsh Agricultural Small Area Statistics (2011).
- There were **4,922** full time principle farmers in the county during 2011.

Further detailed information on all of these themes and sectors can be found within the online Regional Learning and Skills Observatory for South West and Central Wales.

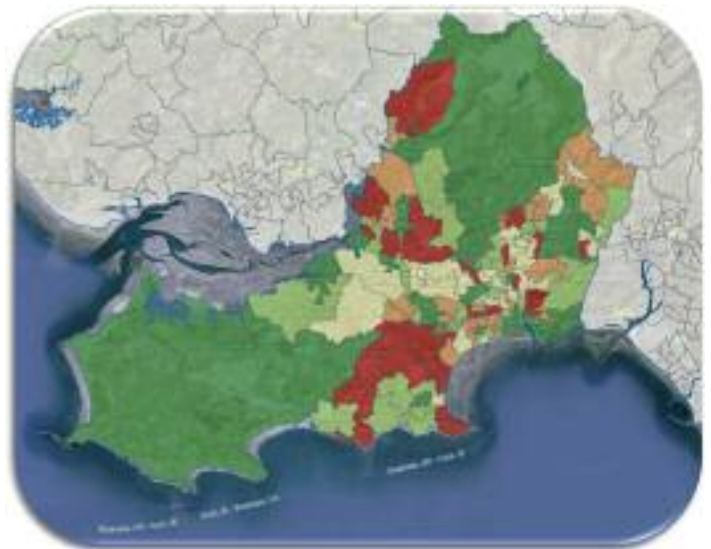
<http://www.rlpsww.org.uk/>



Swansea

Key statistics and data for Swansea during the winter months of 2012 are detailed in the following pages.

Figures from ONS on the 30th of June 2011 stated there were **238,691** people living in Swansea.



Swansea's Population Age Range

Below is an age structure profile for the population of Swansea, according to the ONS on the 30th of June 2011.

| Age Category | Actual Figure | Percentage | Wales Comparator |
|---|----------------|------------|------------------|
| Total Population | 238,691 | N/A | 3,063,758 |
| Number of people aged between 0 and 4 years | 13,084 | 5.5% | 5.8% |
| Number of people aged between 0 and 15 years | 41,322 | 17.3% | 18.1% |
| Number of people aged between 5 and 15 years | 28,238 | 11.8% | 12.3% |
| Number of people aged between 16 and 24 years | 33,674 | 14.1% | 12.2% |
| Number of people aged between 16 and 29 years | 49,170 | 20.6% | 18.2% |
| Number of people aged between 16 and 64 years | 154,336 | 64.7% | 63.4% |
| Number of people aged over 65+ years | 43,033 | 18.0% | 18.5% |



Tourism (STEAM 2011 Statistics)

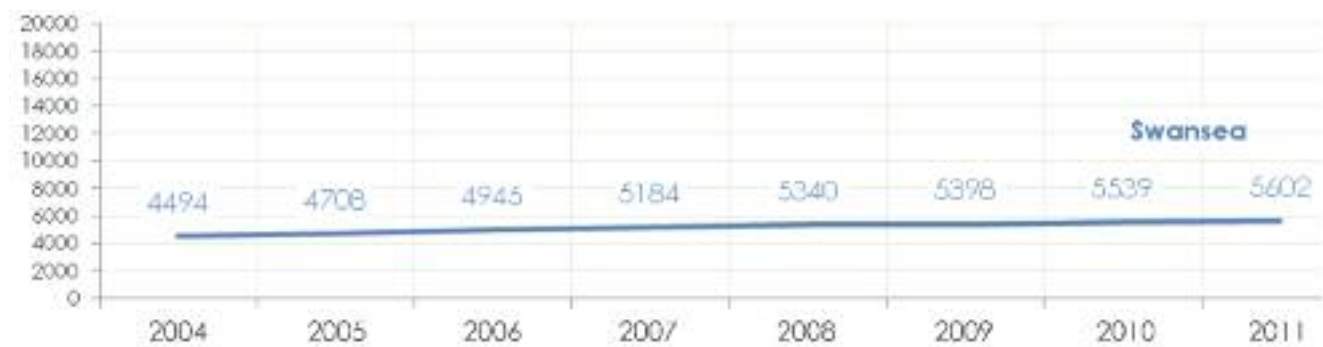
Below are some key statistics taken from the STEAM reports for 2011. These reports are published annually for each county and can be found on the RLSO website.

Employment

According to the STEAM reports for 2011, the total number of people in full time equivalent jobs, in the tourism industry in Swansea during 2011 was **5,602**. The table below breaks down some of the key sectors in which these people were employed.

| % in Accommodation | % in Food & Drink | % in Recreation | % in Shopping | % in Transport |
|--------------------|-------------------|-----------------|---------------|----------------|
| 27.3% | 21.4% | 7.9% | 12.0% | 4.8% |

The chart below shows how this figure has varied since 2004



Expenditure

The total expenditure, in the tourism sector in Swansea during 2011 was **£335 million (2011 £'s millions)**. The table below breaks down the expenditure (by %) within the sub-sectors.

| % in Accommodation | % in Food & Drink | % in Recreation | % in Shopping | % in Transport |
|--------------------|-------------------|-----------------|---------------|----------------|
| 16.0% | 16.7% | 5.1% | 10.3% | 8.5% |



Tourist Numbers

The total tourist numbers in Swansea during 2011 was **4,235,000**. The table below breaks down some of the key areas in which this total expenditure was incurred.

| % staying in Serviced Accommodation | % staying in non- Serviced Accommodation | % staying with friends or family | % day visitors |
|-------------------------------------|--|----------------------------------|----------------|
| 14.7% | 9.8% | 8.5% | 67.1% |

Benefits

The most recent quarterly data, (*Department of Work & Pensions – August 2012*) shows that **27,740** people of working age, claimed benefits within Swansea.

Here is a breakdown of the benefits claimed in Swansea during the **August 2012 quarter**;

| Type of Benefit | Percentage of total benefits claimed | Actual figure | Regional Percentage |
|--|--------------------------------------|---------------|---------------------|
| ESA, Incapacity Benefits or Severe Disablement Allowance | 51.9% | 14,390 | 52.5% |
| Disability Living Allowance, Attendance Allowance or Industrial Injuries Benefits | 8.0% | 2,230 | 8.5% |
| JSA | 19.9% | 5,530 | 18.1% |
| Income Support with a child under 16 and no partner | 7.9% | 2,220 | 7.3% |
| Carer's Allowance | 8.9% | 2,480 | 9.9% |
| Other Income Support (Including IS Disability Premium) or Pension Credit | 2.2% | 600 | 2.5% |
| Widow's Benefit, Bereavement Benefit or Industrial Death Benefit | 1.1% | 310 | 1.2% |

Monthly data for **February 2013** shows that there were a total of **5,670** (3.8% of the total working age population), people claiming JSA in Swansea.



The table below shows the trend of how these figures have varied over the winter months;

| December 2012 | | January 2013 | | February 2013 | |
|---------------------|-----------------------------|---------------------|-----------------------------|---------------------|-----------------------------|
| Total JSA Claimants | % of working age population | Total JSA Claimants | % of working age population | Total JSA Claimants | % of working age population |
| 4,800 | 3.2% | 5,263 | 3.5% | 5,670 | 3.8% |

The number of people **aged between 17 and 24** in the county who were claiming JSA during the winter months was **4,500**.

The table below shows the trend of how these figures have varied over the winter months;

| December 2012 | | January 2013 | | February 2013 | |
|-------------------------------------|---|-------------------------------------|---|-------------------------------------|---|
| Total JSA Claimants (Aged 17 to 24) | % of total JSA claimants who are aged between 17 and 24 | Total JSA Claimants (Aged 17 to 24) | % of total JSA claimants who are aged between 17 and 24 | Total JSA Claimants (Aged 17 to 24) | % of total JSA claimants who are aged between 17 and 24 |
| 1,315 | 27.4% | 1,515 | 28.8% | 1,670 | 29.5% |

The **LSOA** in Swansea which had the **most** JSA Claimants in February 2013 was **Castle 2** with **153 claimants**. The **LSOA's** with the **lowest** amount of JSA Claimants were **Mayals 2 and Newton (Swansea) 2** with **4 claimants each**.

Vacancies

During November 2012 there were **2,175** vacancies in Swansea that were notified to JCP.

Out of the **2,175** vacancies in Swansea during November 2012, **84.7%** had been live unfilled for **less than 1 month**. **12.7%** had been live unfilled for a period of between **1 to 3 months**, whilst **2.1%** had been live unfilled between **3 and 6 months**. **0.5%** had been live unfilled between **6 months and 1 year**.



Vacancy Breakdown

The table below shows in which industries the vacancies were during the autumn months of 2012.

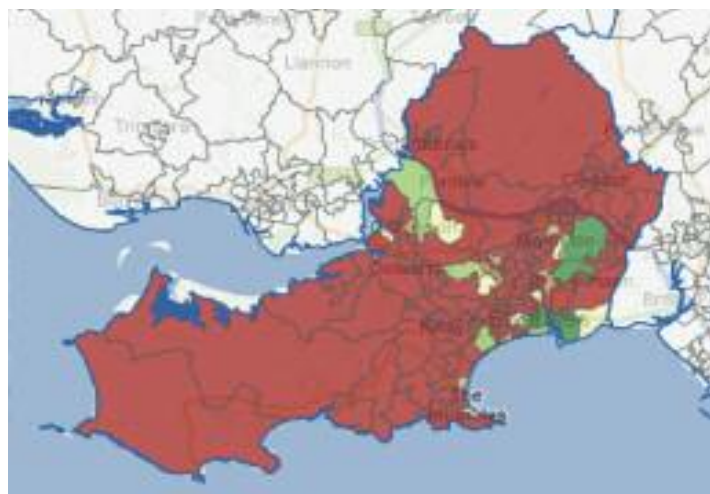
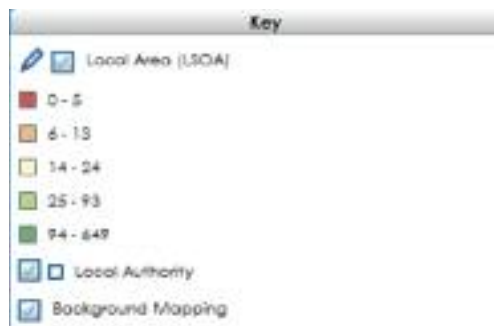
| Industry | September 2012 | | October 2012 | | November 2012 | |
|--|----------------------|---------------|----------------------|---------------|----------------------|---------------|
| | % of Total Vacancies | Actual Figure | % of Total Vacancies | Actual Figure | % of Total Vacancies | Actual Figure |
| Agriculture & Fishing | 0.0% | 1 | 0.3% | 10 | 0.1% | 3 |
| Energy & Water | 0.4% | 12 | 0.4% | 12 | 0.1% | 3 |
| Manufacturing | 0.6% | 17 | 0.7% | 22 | 1.7% | 36 |
| Construction | 5.5% | 150 | 1.8% | 58 | 4.1% | 89 |
| Distribution, Hotels & Restaurants | 5.8% | 157 | 7.5% | 244 | 6.9% | 150 |
| Transport & Communications | 11.9% | 325 | 16.4% | 531 | 19.4% | 422 |
| * Banking, Finance & Insurance | 50.4% | 1,375 | 50.8% | 1,644 | 51.1% | 1,111 |
| Public Administration, Education & Health | 24.0% | 654 | 20.6% | 665 | 14.5% | 315 |
| Other Services | 1.4% | 39 | 1.5% | 49 | 2.1% | 46 |
| TOTAL | | 2,730 | | 3,235 | | 2,175 |

* Figures contained in the 'Banking, Finance, Insurance' indicator are influenced by the fact that recruitment agency jobs notified to JCP are coded under the heading (irrespective of what industry the job is actually in)

The number of vacancies notified to JCP is estimated to represent 19% of total vacancies in the job market (JCP)



Distribution of Vacancies across Swansea



This map, from the RLSO, shows how vacancies were distributed across every ward in Swansea during **November 2012**. The key shown above refers to the number of vacancies. For example, the areas shown as red in the map had **0 - 5** vacancies during **November 2012**.

Vacancies by Ward

The table below groups each ward in Swansea in relation to the number of vacancies reported during the month of **November 2012**.

| LSOA's | | Number of vacancies |
|---|---|---------------------|
| <ul style="list-style-type: none"> • Bishopston (1 and 2) • Bonymaen (1,2 and 3) • Castle (3,5 and 8) • Clydach (1,2,3,4 and 5) • Cockett (1,2 4,5 and 8) • Cwmbwrla (1,2,3,4 and 5) • Dunvant (1,2 and 3) • Fairwood (1 and 2) • Gower (1 and 2) • Gowerton (1,2 and 3) • Killay North (1 and 2) • Killay South (1 and 2) • Kingbridge (1,2 and 3) • Landore (1,3 and 4) • Llangyfelach (1,2 and 3) | <ul style="list-style-type: none"> • Llansamlet (2,3,4,5,6,7 and 8) • Lower Loughor • Mawr • Mayals (1 and 2) • Morriston (1,2,3,4,5,6,10 and 11) • Mynyddbach (1,2,3,4,5 and 6) • Newtown (1 and 2) • Oystermouth (2 and 3) • Penclawdd (1 and 2) • Penderry (2,3,4,5,6 and 7) • Penllergaer 1 • Pennard (1 and 2) • Penyrheol (1,3 and 4) • Pontardulais (1,2,3 and 4) • St Thomas 3 • Sketty (1,2,3,4,5,6,7 and 8) • Townhill (1,2,3,4,5 and 6) | 0-5 |



Vacancies by Ward (continued)

| LSOA's | | Number of vacancies |
|--|---|---------------------|
| <ul style="list-style-type: none"> • Cocket 7 • Gorseinon 2 • Landore 2 • Morryston 8 | <ul style="list-style-type: none"> • Penderry 1 • Uplands 6 • West Cross 3 | 6-13 |
| <ul style="list-style-type: none"> • Castle (1 and 6) • Cockett 3 • Morryston 9 • Oystermouth 1 • Penllergaer 2 | <ul style="list-style-type: none"> • St Thomas 1 • Uplands (2 and 4) • Upper Loughor 2 | 14-24 |
| <ul style="list-style-type: none"> • Castle 7 • Cockett 6 • Gorseinon 1 | <ul style="list-style-type: none"> • Morryston 7 • Penyrheol 2 • Sketty 9 | 25-93 |
| <ul style="list-style-type: none"> • Bonymaen 4 • Castle (2 and 4) • Llansamlet 1 • St Thomas (2 and 4) | | 94-649 |

To find out more detailed information regarding vacancies in South West and Central Wales follow the link below;

<http://rlp.infobasecymru.net/IAS/dataviews/tabular?viewId=599&geold=1&subsetId=42>



Destinations Data (2012)

The table below presents the results from the Careers Wales Year 11, 12 and 13 School Leavers Destinations survey (2012).

| | Year 11 | Year 12 | Year 13 |
|---------------------------------|--------------|------------|------------|
| Continued in college | 1,336 | 82 | 54 |
| Continued in school | 843 | 589 | 89 |
| Continued into higher education | 0 | 0 | 368 |
| Gap year | 0 | 0 | 11 |
| Part time education | 12 | 6 | 4 |
| Employed | 39 | 22 | 70 |
| NEET | 80 | 16 | 31 |
| WBT – Employed | 20 | 3 | 7 |
| WBT – Non-employed | 159 | 29 | 7 |
| No response | 1 | 12 | 37 |
| Moved away | 18 | 12 | 6 |
| Total Numbers | 2,508 | 771 | 684 |

Pupil Numbers and Schools

According to the latest data from the annual year 2011/2012, there are **20,885** pupils in primary schools in Swansea (WAG-PLASC data), distributed across **83** schools throughout the county.

There are **14,030** pupils in secondary schools in the county. This total is distributed across **15** secondary schools.

For the annual year period 2011-2012, a total of **18.5%** of all Primary School pupils in Swansea, were classified as being **eligible for free school meals (18.8 % for Wales)**.

18.3% of all Secondary School pupils in the county were classified as being **eligible for free school meals** for the annual year 2011-2012 (**15.8 % for Wales**).

The **Pupil Teacher Ratio** for LEA maintained **primary** schools for the annual year 2011-2012, in Swansea was **21.5** (Wales Figure was 20.7). The figure for LEA maintained secondary schools was **17.8** (Wales Figure 16.7).

73.3% of relevant pupils in the annual year 2011-2012 achieved the expected level in Key Stage 3 (Level 5+) in Swansea. This is in comparison to the national figure which was **72.5%**.



Other key facts about Swansea contained within the Observatory

Local Authority Finance

- According to data provided by Welsh Government, the gross revenue expenditure on **Social Services** (£ per head) during **2012-2013** in **Swansea** was **£474** (*Expenditure covers children and families services, including children's homes, fostering and adoptive services, home care and nursing homes, care for the elderly, care for people with physical, mental or learning disabilities, asylum seekers and substance misuse*).
- The gross revenue expenditure on **Education** (£ per head) during **2012-2013** in **Swansea** was **£836** (*Expenditure covers individual school's budget, additional learning needs, inter authority recouplement, staff, school improvements and access to education*).

Economy

- Out of a total **13,955** companies in **Swansea** in 2011 **1.1%** were foreign owned according to the Welsh Government Regional Economic Labour Market Profile.
- **11.7%** of employees in **Swansea** during 2011 were working within foreign owned companies; the remaining **88.3%** were working within UK owned companies.

Energy & Environment

- According to figures published for the June 2012 quarter, **963** households had domestic solar photovoltaic installations in **Swansea**.
- In 2011, the total consumption of domestic electricity and gas in the county was **1,740,244mWh**, which is a **5.1% decrease** on figures relating to 2010.

Agriculture

- The Welsh Agricultural Small Area Statistics (2011) states that the total area farmed, in hectares, was **19,490** in **Swansea**.
- The total number of cattle registered in **Swansea** for 2011 was **14,636**, according to the Welsh Agricultural Small Area Statistics (2011).
- There were **322** full time principle farmers in the county during 2011.

Further detailed information on all of these themes and sectors can be found within the online Regional Learning and Skills Observatory for South West and Central Wales.

<http://www.rlpsww.org.uk/>



Glossary

This glossary gives definitions to key terms and acronyms used in this report.

BRES - *Business register and employment survey*
An ONS (Office for National Statistics) business survey which replaces the ABI (Annual business inquiry).

ESA - *Employment and Support Allowance*
Employment and Support Allowance (ESA) is money for people who have limited capability for work because of their sickness or disability. It is for people who do not get Statutory Sick Pay. ESA is a benefit which replaced Incapacity Benefit and Income Support for people who are sick or have disabilities for most new claims from 27 October 2008.

GVA - *Gross Value Added*
Gross value added is the economic measure of the value of outputs or goods produced within a sector or industry.

IDBR - *Inter-Departmental Business Register*
The IDBR is a business register which contains information on all businesses in the UK which are VAT registered or operating a PAYE scheme.

JCP - *Job Centre Plus*
A government- funded agency whose sole aim is to assist people of working age in the UK to find employment.

JSA - *JSA*
Jobseeker's Allowance is the main benefit for people in Great Britain of working age who are available for, capable of and actively seeking

work, or who work less than 16 hours a week on average. Working age is aged 18 or over but below State Pension age. Jobseeker's Allowance isn't normally paid to 16 or 17 year olds, except in special cases.

Live Unfilled Vacancies

Vacancies are defined as positions for which employers are actively seeking to recruit outside their business or organisation. Live Unfilled vacancies are those vacancies for which employers are currently recruiting and have not yet been taken by a suitable applicant. A vacancy filled becomes a job (Office of National Statistics).

LSOA - *Lower Super Output Area*
This refers to the size of an area. Typically a LSOA area consists of around 1,500 people; therefore data to a LSOA level is local area data.

SIC - *Standard Industrial Classification*
This is used to classify employers' /Agencies' primary business functions.

STEAM - *Scarborough Tourism Economic Assessment Monitor*
A model which provides economic estimates and measurements in relation to the tourism industry.

WAG-PLASC - *Welsh Assembly Government- Pupil Level Annual School Census*
An annual statistical release generated from data obtained from nursery, primary, secondary and special school's in Wales.



The Regional Learning Partnership South West and Central Wales (RLPSW&CW) is a transformational partnership bringing education and regeneration partners together to help provide a better future for learners and potential learners across South West and Central Wales.

A Regional Learning & Skills Observatory (RLSO) for South West and Central Wales (SW&CW) will improve access to local data and intelligence for learning, skills and the labour market, through a single, interactive information base and website.

The RLSO can be accessed via the main website for the Regional Learning Partnership:
www.rlpwww.org.uk

Cover and banner image – © Crown Copyright (2013) Visit Wales

For further information, or if you would like to comment on this publication, please contact:

Rachel Rees

RLP Data Officer

Regional Learning Partnership -
South West and Central Wales

Parc y Scarlets,
Parc Pemberton,
Llanelli SA14 9UZ
Phone: 01554 742427
E-Mail:

rachelrees@cccpartners.org.uk

Gaynor Griffiths

RLP Development Co-ordinator

Regional Learning Partnership -
South West and Central Wales

Parc y Scarlets,
Parc Pemberton,
Llanelli SA14 9UZ
Phone: 01554 742428
E-Mail:

GGriffiths@carmarthenshire.gov.uk